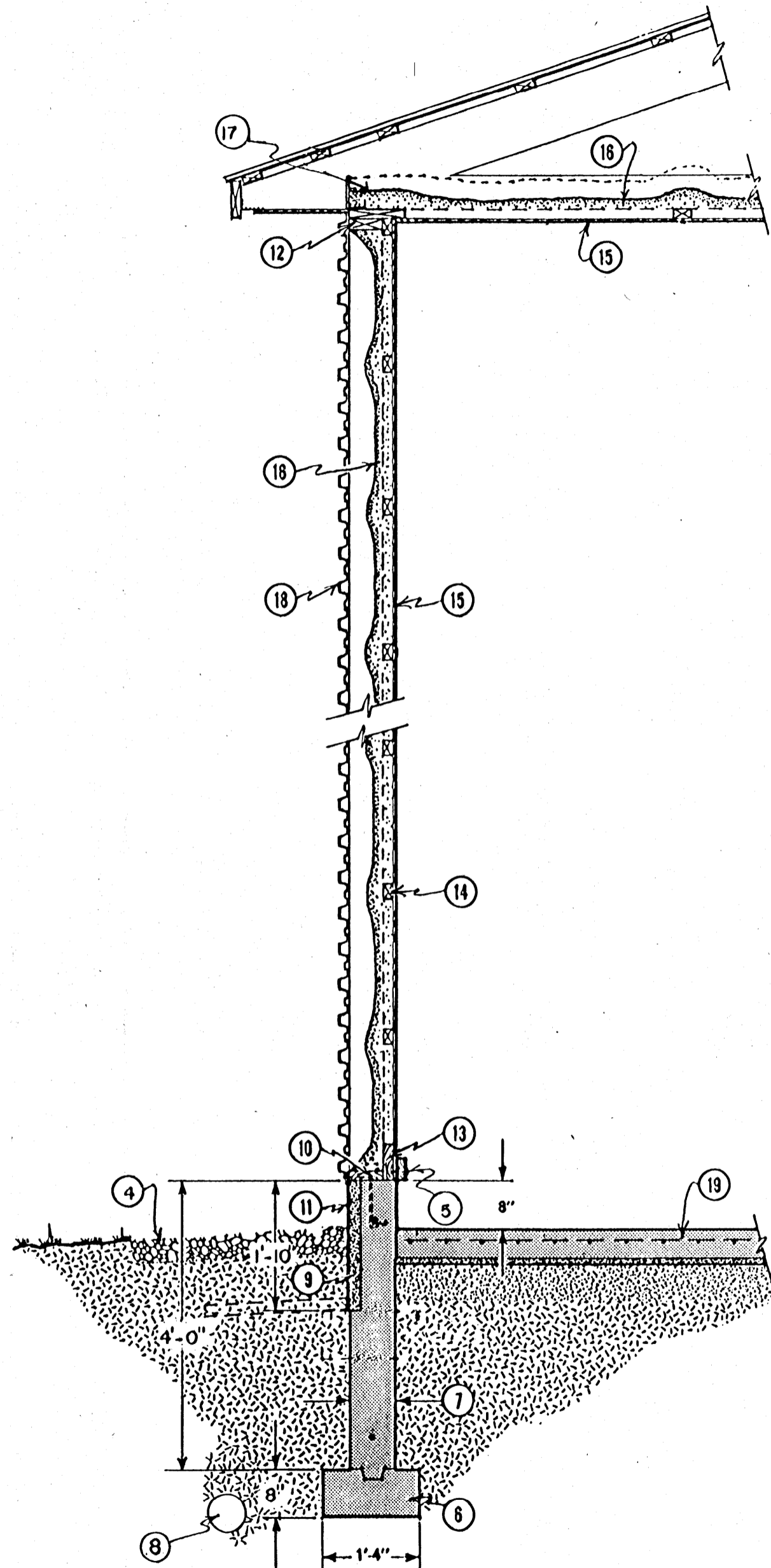
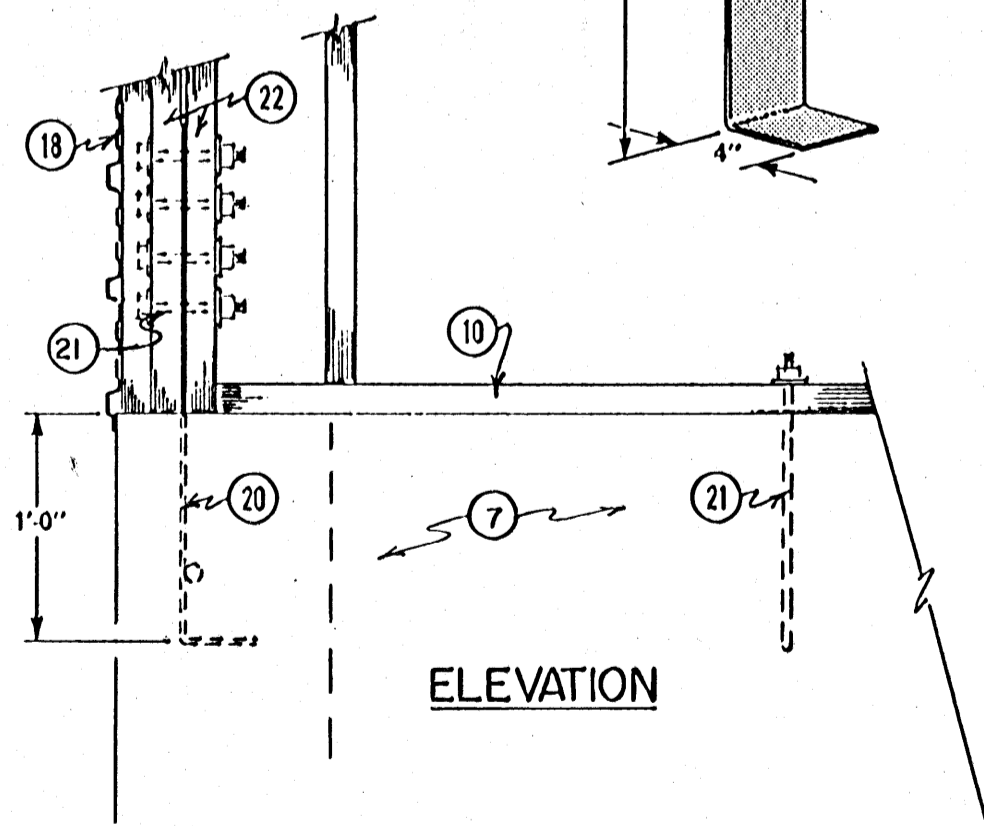
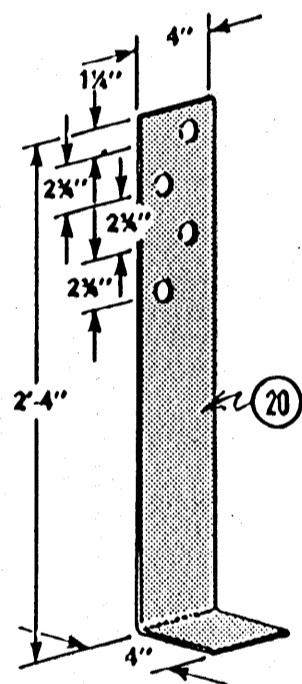
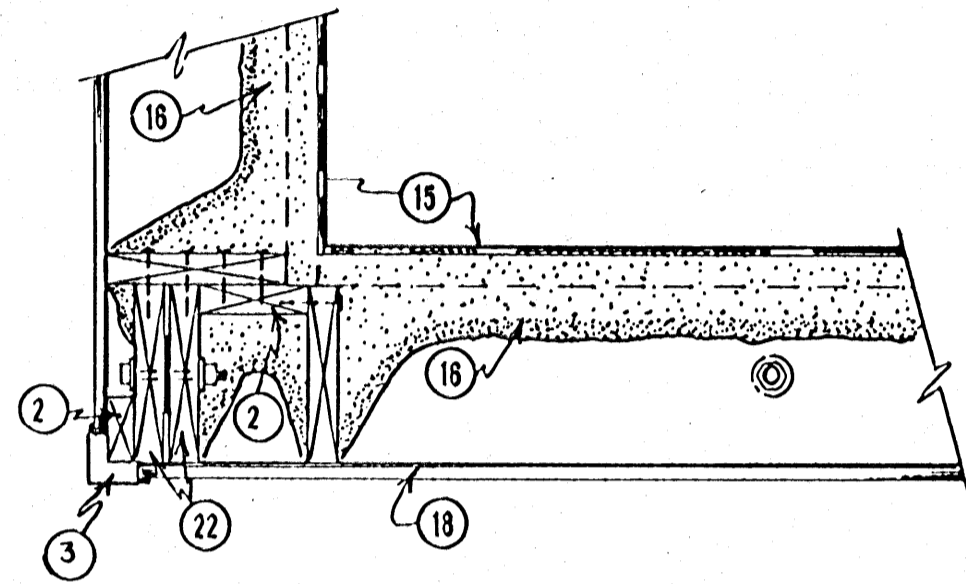


① STUD SIZE TABLE

STUD WALL HEIGHT ft.	STUD SIZE	ENDWALL ANCHOR BOLT SPACING in.
	f = 1450 psi	
	E = 1,700,000 psi	
	No. 2 Douglas Fir	
12	2 x 6	48
14	2 x 8	48
16	2 x 8	36
18	2 x 8	32
20	2 x 10	32



1. Studs @ 4'-0" o.c., recommended stud sizes based on 56'-0" clear span bldg., 52 psf total roof + ceiling load combined with 13 psf wind gust pressure
2. 2x stud width blocking(see ①), nail to studs
3. Outside corner trim, to match siding
4. 36" x 4" deep coarse gravel splash pad
5. 2 x 6 bumper rail
6. Concrete footing, 2x4 keyway, extend below frostline 4'-0" min.
7. Concrete foundation to below frost, 2-no. 6 rebars continuous; provide vertical control joints 50'-0" o.c.; foundation thickness = stud size + 2".
8. 6" drain tile placed outside of footing as needed.
9. 2" x 1'-10" polystyrene perimeter insulation tack with finishing nails to form; in colder climate increase to 3". Alternatively the insulation could be placed inside of wall.
10. 2" CCA-pressure-treated sill, anchor with 1/2" x 1'-0" anchor bolts @ 4'-0" o.c.
11. Mechanical damage resistance facing for foundation insulation when insulation is placed on the outside of wall.
12. Bottom plate same size as studs, top plate 4" wider, joints staggered 8'-0" o.c.
13. 2 x 6 CCA-pressure-treated base strapping, 2-3 1/2" galv. spiral nails to each stud and sill
14. 2 x 3 horizontal strapping @ 2'-0" o.c.
15. 1/2" select sheathing fir plywood, face grain vertical; galv. fasteners; plywood joints spaced 1/8"
16. R-11 insulation or better in walls and R-28 insulation in ceiling. Vapor barrier to be placed toward the outside
17. Adequately anchor roof truss to top plate.
18. Galv. steel exterior siding, screw beside ribs to ①.
19. 5" concrete floor with 6x6, 6ga. welded wire mesh; optional 1" rigid insulation on compacted sand fill
20. 1/4" steel anchor strap, drill for 5/8" bolts, tie to horizontal rebar. Alternative commercial strap connectors are available.
21. On all sides use 1/2" x 1'-0" anchor bolts, see ① for spacing
22. 2" stud drilled for bolts.

COOPERATIVE EXTENSION SERVICE
AGRICULTURE AND HOME ECONOMICS

AND
UNITED STATES DEPARTMENT OF AGRICULTURE COOPERATING

REFRIGERATED FRUIT PALLET
VEGETABLE STORAGE WALL

CAN '87 6389 SHEET 1 OF 1

DRAWING NOT TO SCALE