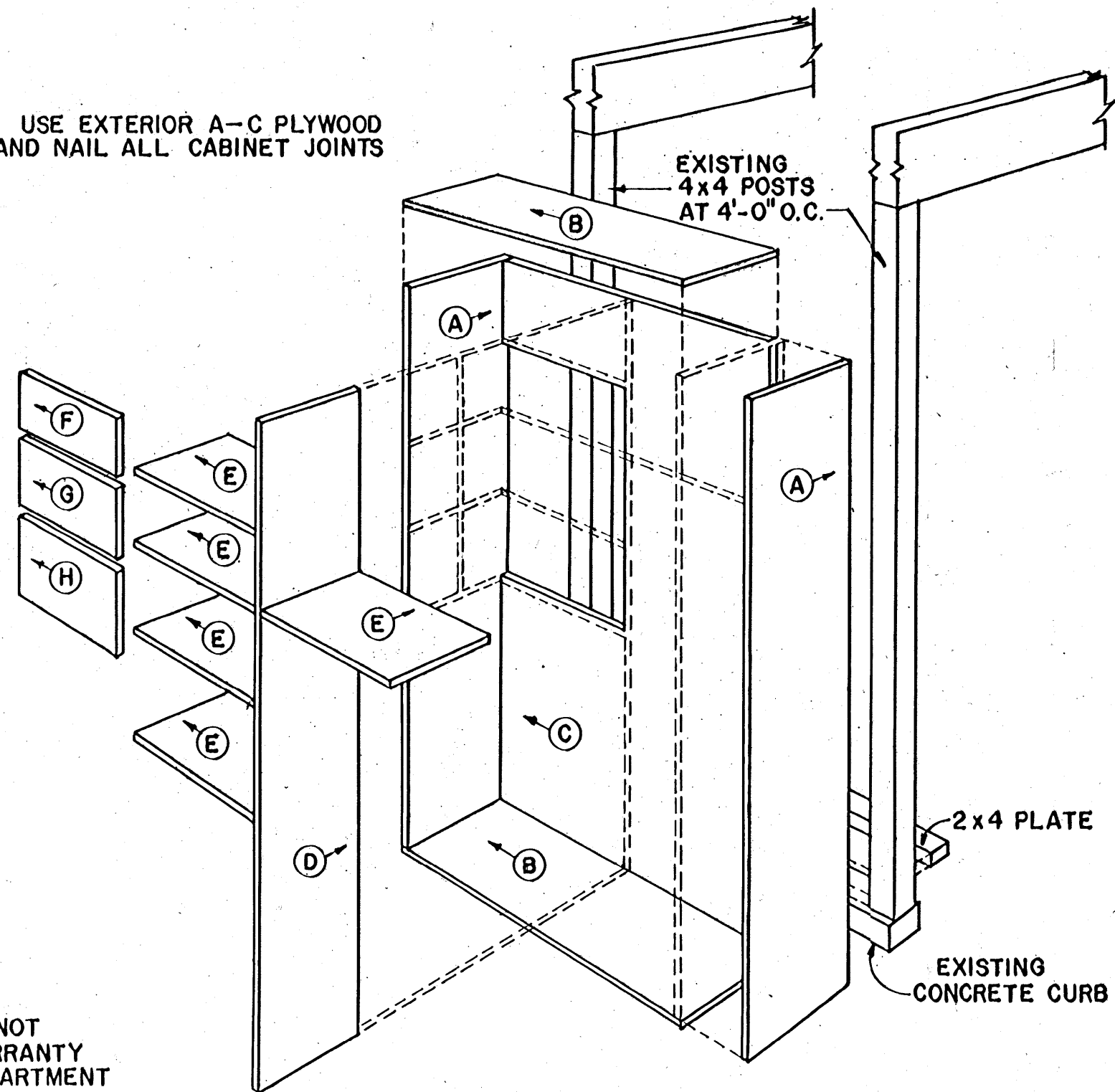
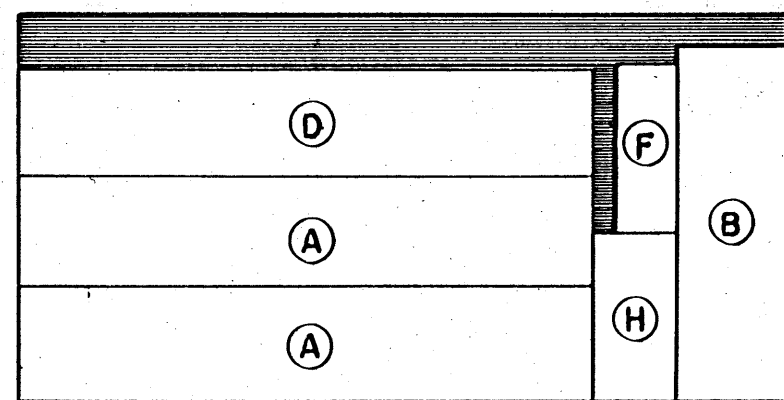


NOTE: USE EXTERIOR A-C PLYWOOD  
GLUE AND NAIL ALL CABINET JOINTS

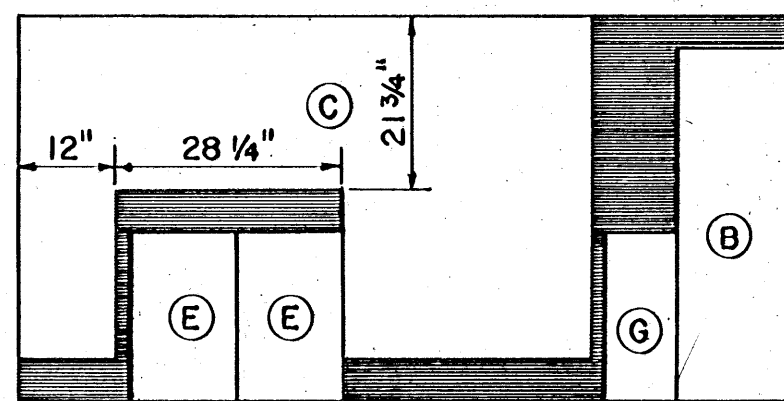


PERSPECTIVE

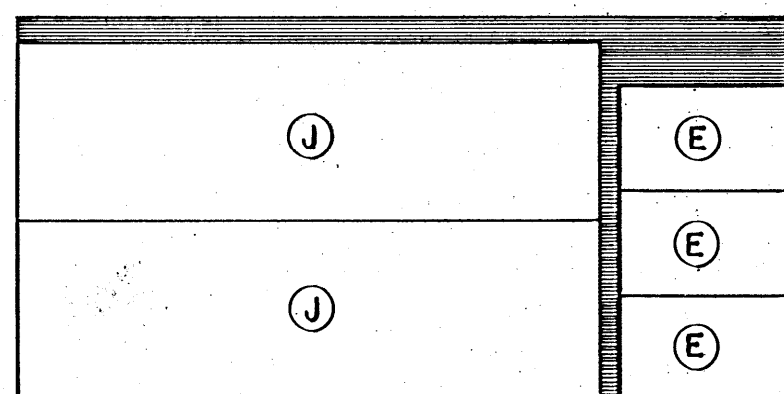
CUTTING DIAGRAMS



3/4" x 4'-0" x 8'-0" EXTERIOR A-C



3/4" x 4'-0" x 8'-0" EXTERIOR A-C



3/4" x 4'-0" x 8'-0" EXTERIOR A-C

NOTE: DOORS J SHOWN  
IN ELEVATION

NOTE:  
MENTION OF A TRADE NAME DOES NOT  
CONSTITUTE A GUARANTEE OR WARRANTY  
OF THE PRODUCT BY THE U.S. DEPARTMENT  
OF AGRICULTURE OR AN ENDORSEMENT BY  
THE DEPARTMENT OVER OTHER PRODUCTS  
NOT MENTIONED.

PLYWOOD PARTS

CODE	NO. REQ'D.	SIZE	PART IDENTIFICATION
(A)	2	14" x 71 1/2"	SIDE
(B)	2	14" x 44 1/4"	TOP AND BOTTOM
(C)	1	42 3/4" x 71 1/2"	BACK
(D)	1	13 1/4" x 71 1/2"	DIVIDER
(E)	5	13 1/4" x 21"	SHELF
(F)	1	7 1/4" x 21"	SHELF DIVIDER
(G)	1	9 1/4" x 21"	SHELF DIVIDER
(H)	1	10 1/4" x 21"	SHELF DIVIDER
(J)	2	22 1/8" x 73"	DOOR



SCALE: 1/2"=1'-0" UNLESS OTHERWISE NOTED

COOPERATIVE EXTENSION WORK IN  
AGRICULTURE AND HOME ECONOMICS  
STATE OF MISSISSIPPI  
MISSISSIPPI STATE UNIVERSITY  
AND  
UNITED STATES DEPARTMENT OF AGRICULTURE COOPERATING

LAWN TOOL STORAGE

APA '77

6283

SHEET 1 OF 1