

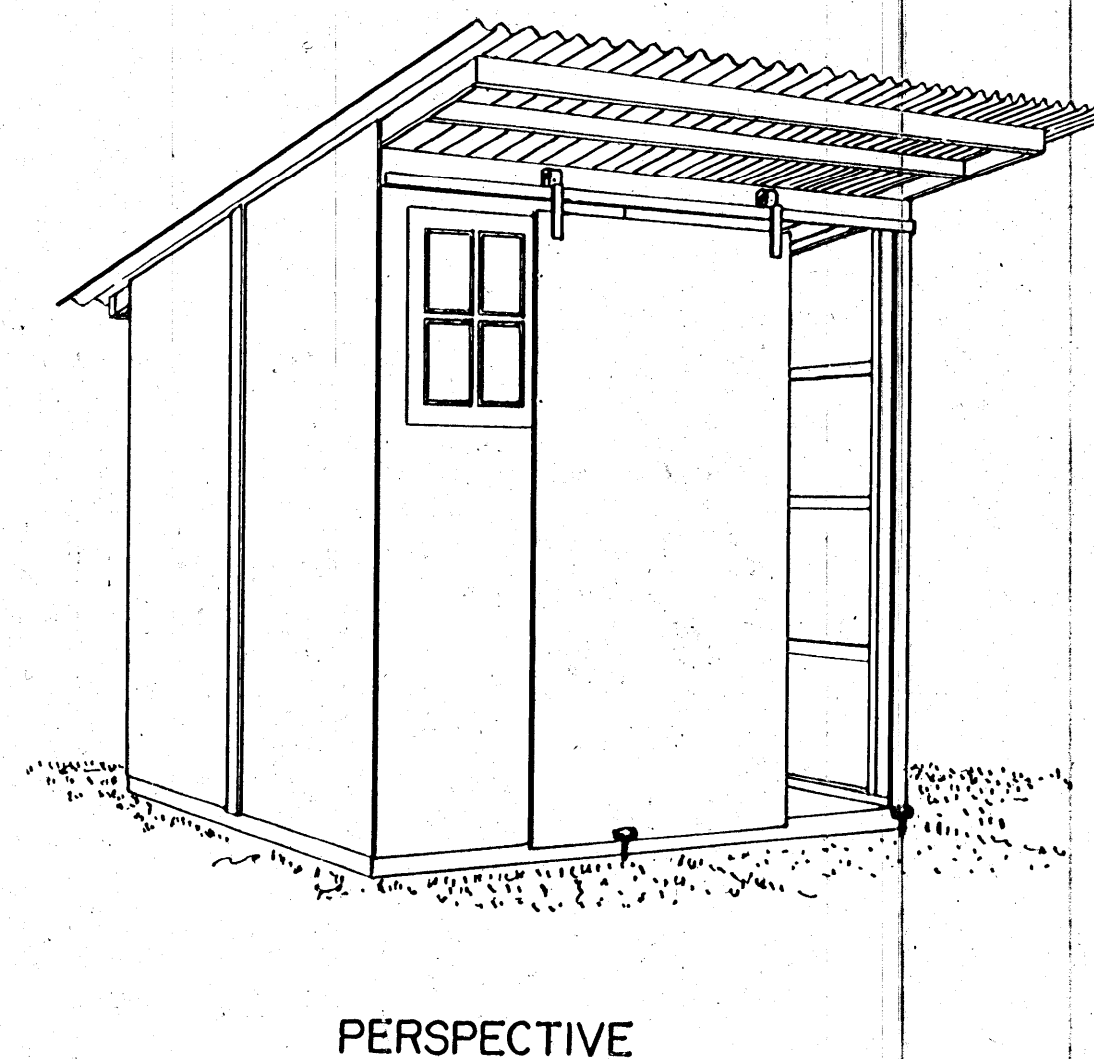
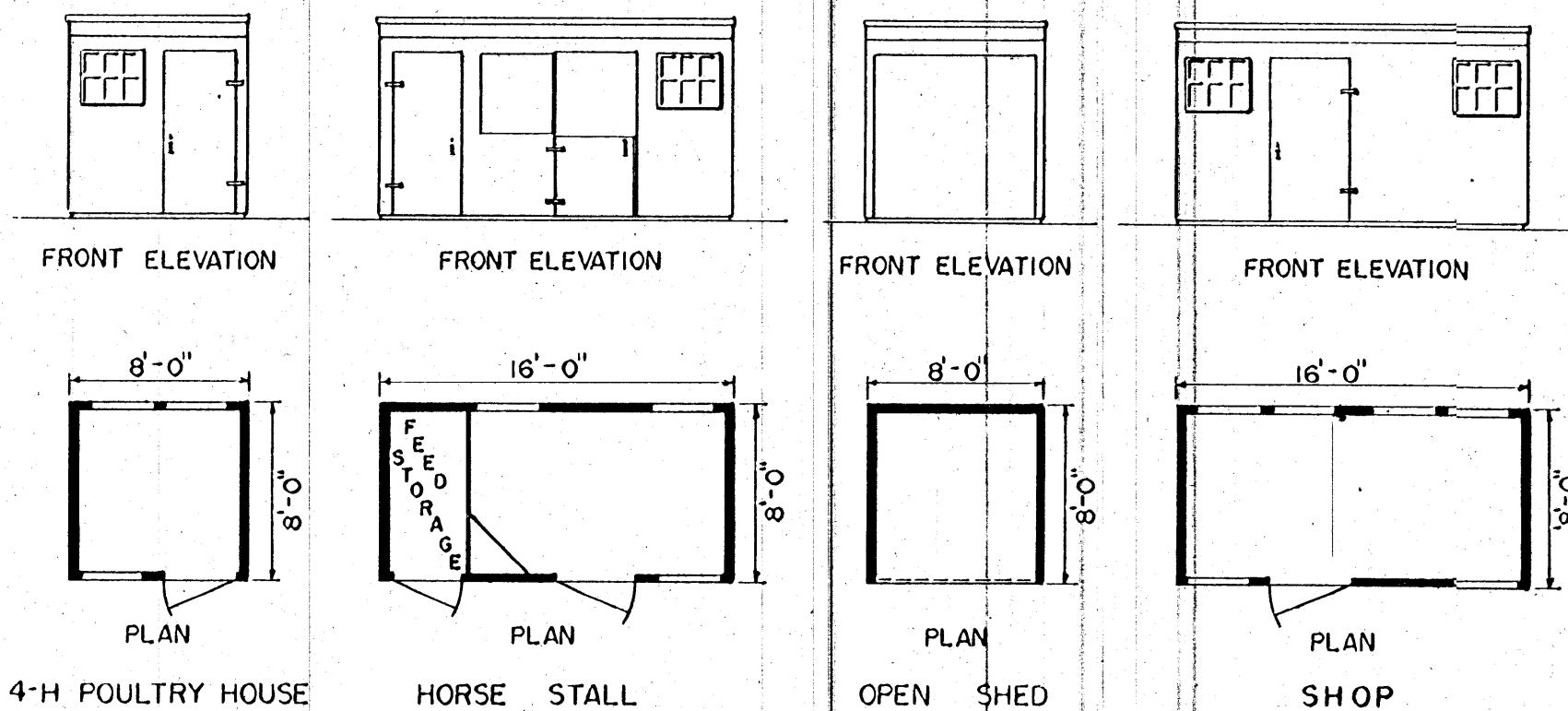
## BILL OF MATERIALS

ITEM	PCS.	SIZE	AMOUNT
<b>CONCRETE FLOOR</b>			
CONCRETE	1	8'-0" x 8'-0" x 4"	1 CU. YD.
ANCHOR BOLTS	14	3/8" x 6"	14 EA.
<b>OPTIONAL WOOD FLOOR</b>			
JOISTS	5	2x4x8'-0"	27 F.B.M.
JOIST HEADER	2	2x6x8'-0"	16 F.B.M.
END JOIST & SKIDS	5	4x4x8'-0"	54 F.B.M.
FLOORING, EXTERIOR PLYWOOD	2	5/8" x 4'-0" x 8'-0"	2 SHEETS
EYE BOLTS	2	1/2" x 6"	2 EA.
NAILS, COMMON	16d		1 3/4 LBS.
NAILS, GALVANIZED	6d		3/4 LB.
<b>2 REAR PANELS</b>			
STUDS	4	2x4 x 6'-0"	16 F.B.M.
SILL, GIRTS, & PLATE	10	2x4 x 4'-0"	27 F.B.M.
SASH BLOCKING	1	2x4 x 2'-0"	2 F.B.M.
SIDING, EXTERIOR PLYWOOD	2	3/8" x 4'-0" x 8'-0"	2 SHEETS
BATTEN, EXTERIOR PLYWOOD	1	3/8" x 3" x 6'-0"	1 STRIP
WINDOW	1	1'-8" x 3'-0"	1 EA.
NAILS, COMMON	16d		1 1/4 LBS.
NAILS, GALVANIZED	6d		3/4 LB.
<b>4 SIDE PANELS</b>			
GIRTS & SILL	10	2x4 x 4'-0"	27 F.B.M.
FRONT & CENTER STUDS	6	2x4 x 8'-0"	32 F.B.M.
REAR STUDS	2	2x4 x 6'-0"	8 F.B.M.
SIDING, EXTERIOR PLYWOOD	4	3/8" x 4'-0" x 8'-0"	4 SHEETS
BATTENS, EXTERIOR PLYWOOD	2	3/8" x 3" x 8'-0"	2 STRIPS
RAFTER TRIM, FRONT	2	3/8" x 4" x 2'-8"	2 STRIPS
RAFTER TRIM, REAR	2	3/8" x 4" x 8"	2 STRIPS
RAILS, COMMON	16d		2 1/2 LBS.
RAILS, GALVANIZED	6d		2 LBS.
<b>I FRONT PANEL</b>			
STUDS	3	2x4 x 8'-0"	16 F.B.M.
SILL, GIRTS, & PLATE	5	2x4 x 4'-0"	14 F.B.M.
HEADER	1	2x6 x 4'-0"	4 F.B.M.
SASH BLOCKING	1	2x4 x 4'-0"	3 F.B.M.
SIDING, EXTERIOR PLYWOOD	1	3/8" x 4'-0" x 8'-0"	1 SHEET
WINDOW	1	2'-5" x 3'-0"	1 EA.
NAILS, COMMON	16d		1 LB.
NAILS, GALVANIZED	6d		1/2 LB.
<b>I FRONT PANEL - SLIDING DOOR</b>			
STUDS	3	2x4 x 8'-0"	16 F.B.M.
PLATE	1	2x4 x 4'-0"	3 F.B.M.
HEADER	1	2x6 x 4'-0"	4 F.B.M.
SIDING, EXTERIOR PLYWOOD	1	3/8" x 2" x 7'-5"	1 STRIP
	1	3/8" x 4" x 7'-5"	1 STRIP
	1	3/8" x 7" x 4'-0"	1 STRIP
DOOR, EXTERIOR PLYWOOD	1	3/4" x 4'-0" x 8'-0"	1 SHEET
SLIDING DOOR TRACK	1	8'-0" LONG	1 EA.
SLIDING DOOR TROLLEYS	2	3" DIA. WHEEL	2 EA.
DOOR STAY ROLLERS	2	2" DIA. WHEEL	2 EA.
NAILS, COMMON	16d		1/2 LB.
NAILS, GALVANIZED	6d		1/4 LB.
<b>2 ROOF PANELS</b>			
RAFTERS	4	2x4 x 12'-0"	32 F.B.M.
GIRTS	14	2x4 x 4'-0"	38 F.B.M.
FACIA, FRONT	1	3/8" x 4" x 8'-0"	1 SHEET
FACIA, REAR	1	3/8" x 4" x 8'-0"	
SOFFIT, FRONT	1	3/8" x 2'-7 3/4" x 8'-0"	
SOFFIT, REAR	1	3/8" x 7" x 8'-0"	
NAILS, COMMON	16d		1 1/2 LBS.
NAILS, GALVANIZED	6d		3/4 LBS.
NAILS, ALUMINUM		2" SCREW SHANK	100 EA.
ROOFING, ALUMINUM	2	8V CRIMP .024" x 50" x 12'-0"	2 SHEETS
FRAMING ANCHORS (AK)	4	18 GAUGE	4 EA.
FRAMING ANCHORS (AL)	4	18 GAUGE	4 EA.

## USES OF UTILITY SHED

- I. GENERAL
  1. ALL JOINTS MAY BE CAULKED TO PROVIDE A MORE WEATHER PROOF STRUCTURE.
  2. DOORS MAY BE SLIDING OR SWING TYPE.
  3. CONCRETE OR WOOD FLOOR SHOWN ON SHEET No. 2
- II. TOOL SHED 8'-0" x 8'-0" (SHOWN ABOVE)
- III. 4-H 20 BIRD POULTRY HOUSE 8'-0" x 8'-0"
  1. USE 2" INSULATION WITH VAPOR BARRIER IN WALLS & CEILING.
  2. INTERIOR FINISH SHOULD BE A DENSE, EASILY CLEANED MATERIAL.
  3. USE HOPPER TYPE WINDOWS FOR VENTILATION.
  4. PROVIDE SCREENS FOR DOORS & WINDOWS. (1" MESH DESIRED)
- IV. HORSE STALL OR SHEEP PEN 8'-0" x 16'-0"
  1. STALL AREA INTERIOR, FINISHED WITH 1/2" PLYWOOD
  2. PLANK FLOOR RECOMMENDED.
- V. SHOP

NOTE  
BATTENS, RAFTER TRIM, SOFFITS, & FACIAS TO BE CUT FROM 1 SHEET OF 3/8" x 4'-0" x 8'-0" EXTERIOR PLYWOOD & WASTE FROM THE SIDING USED ON THE SIDE & REAR PANELS

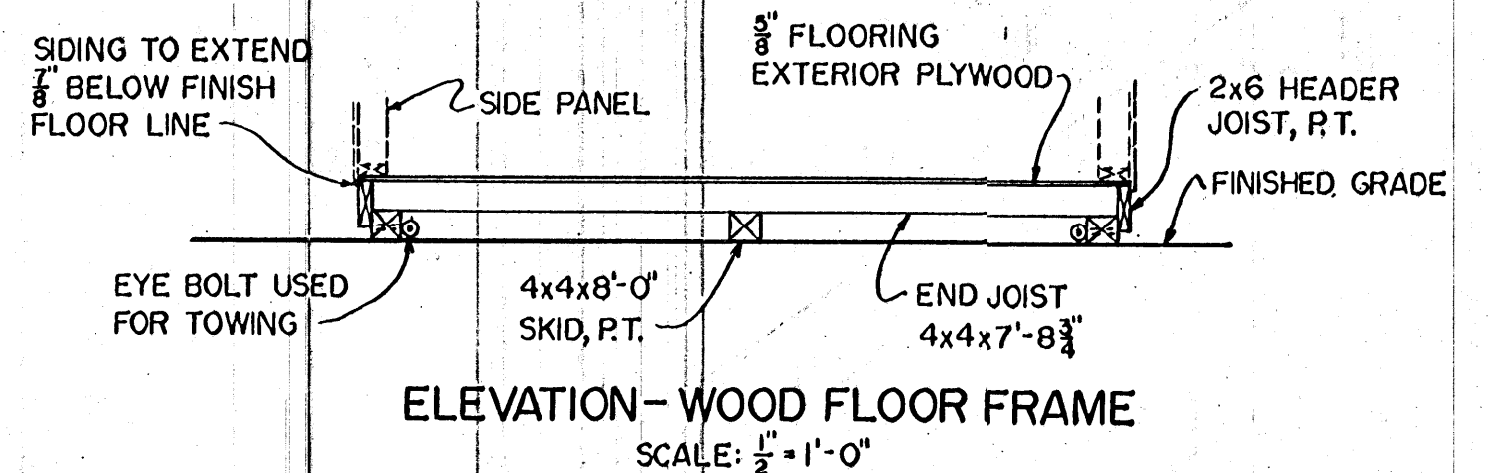
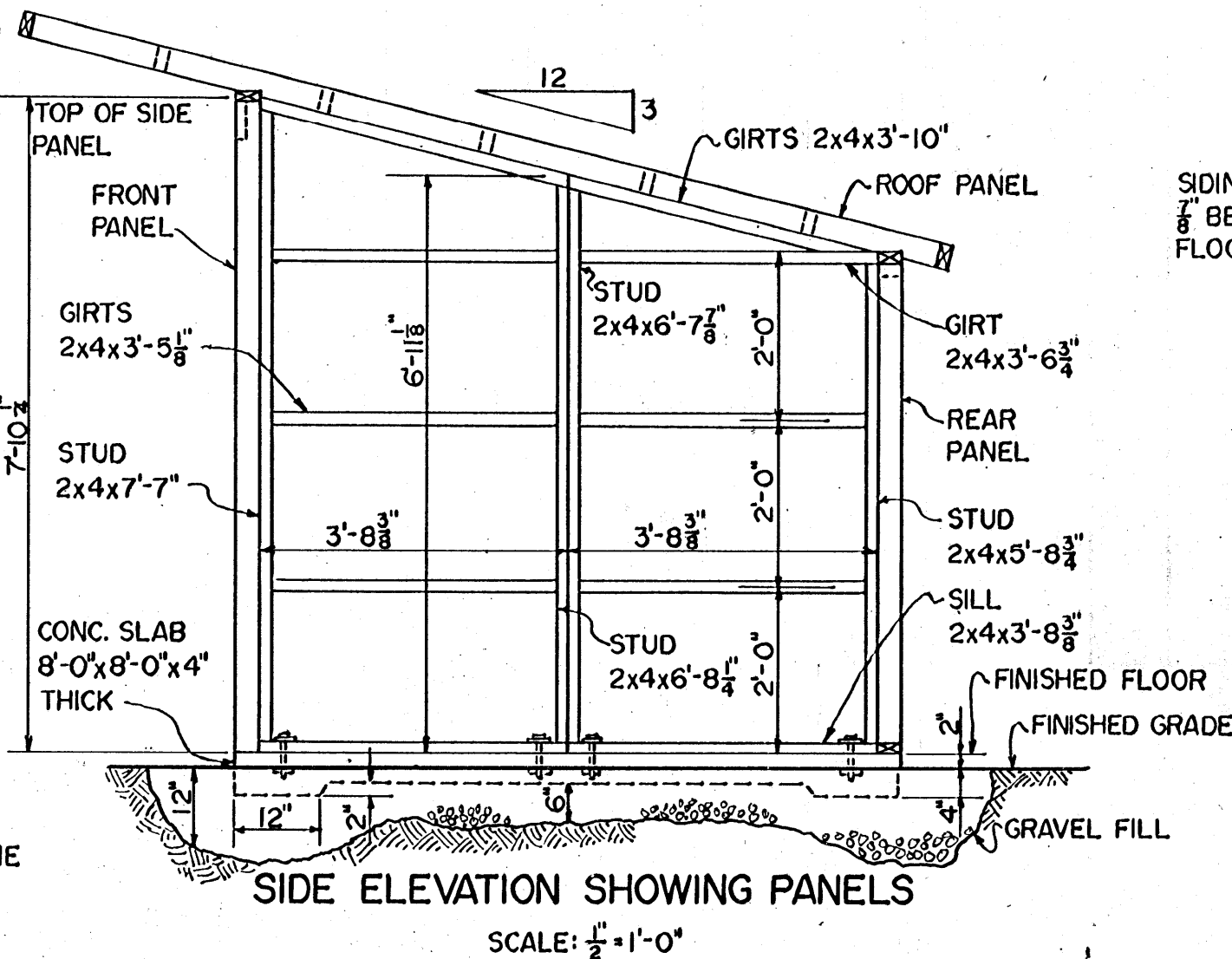
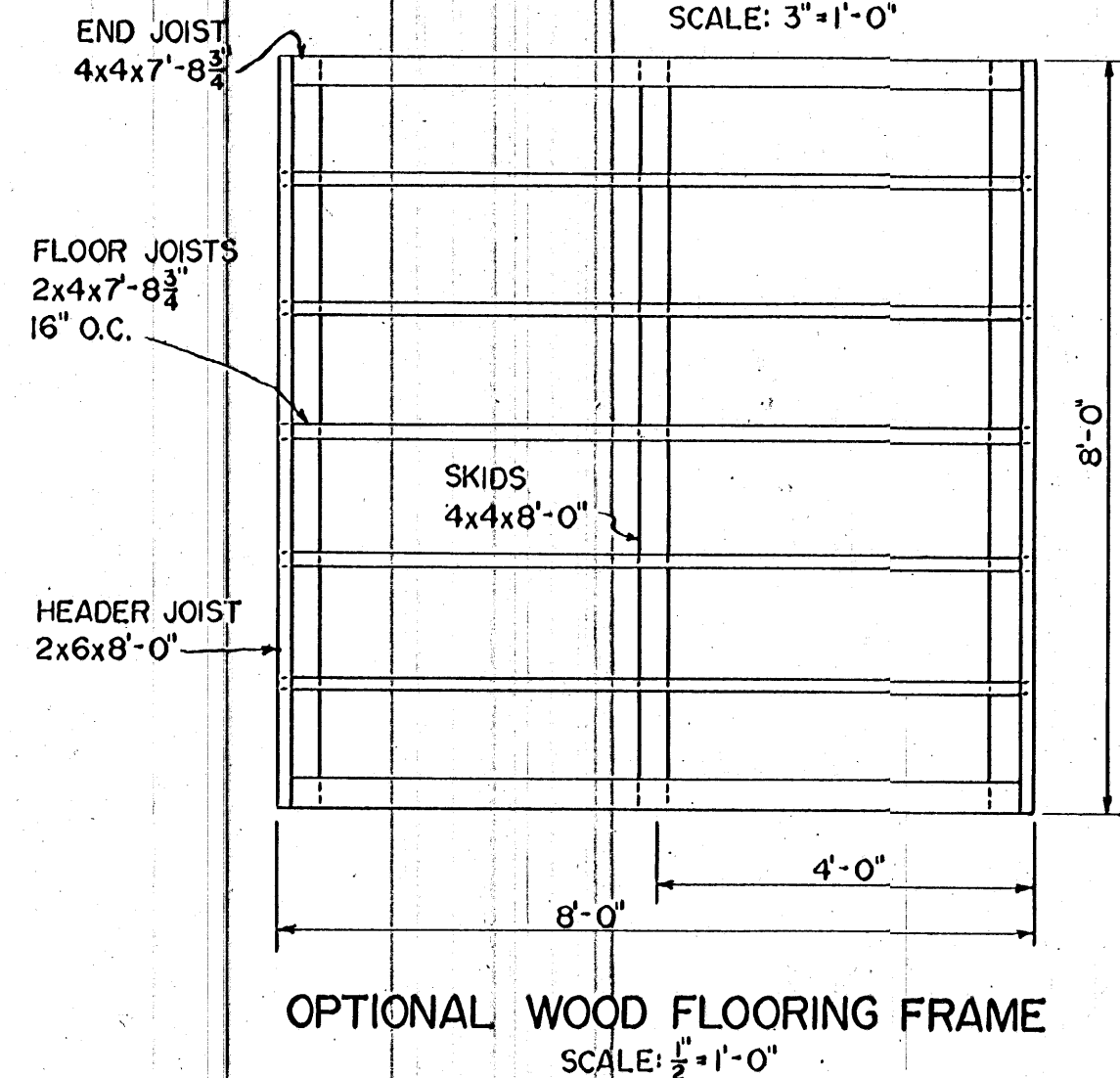
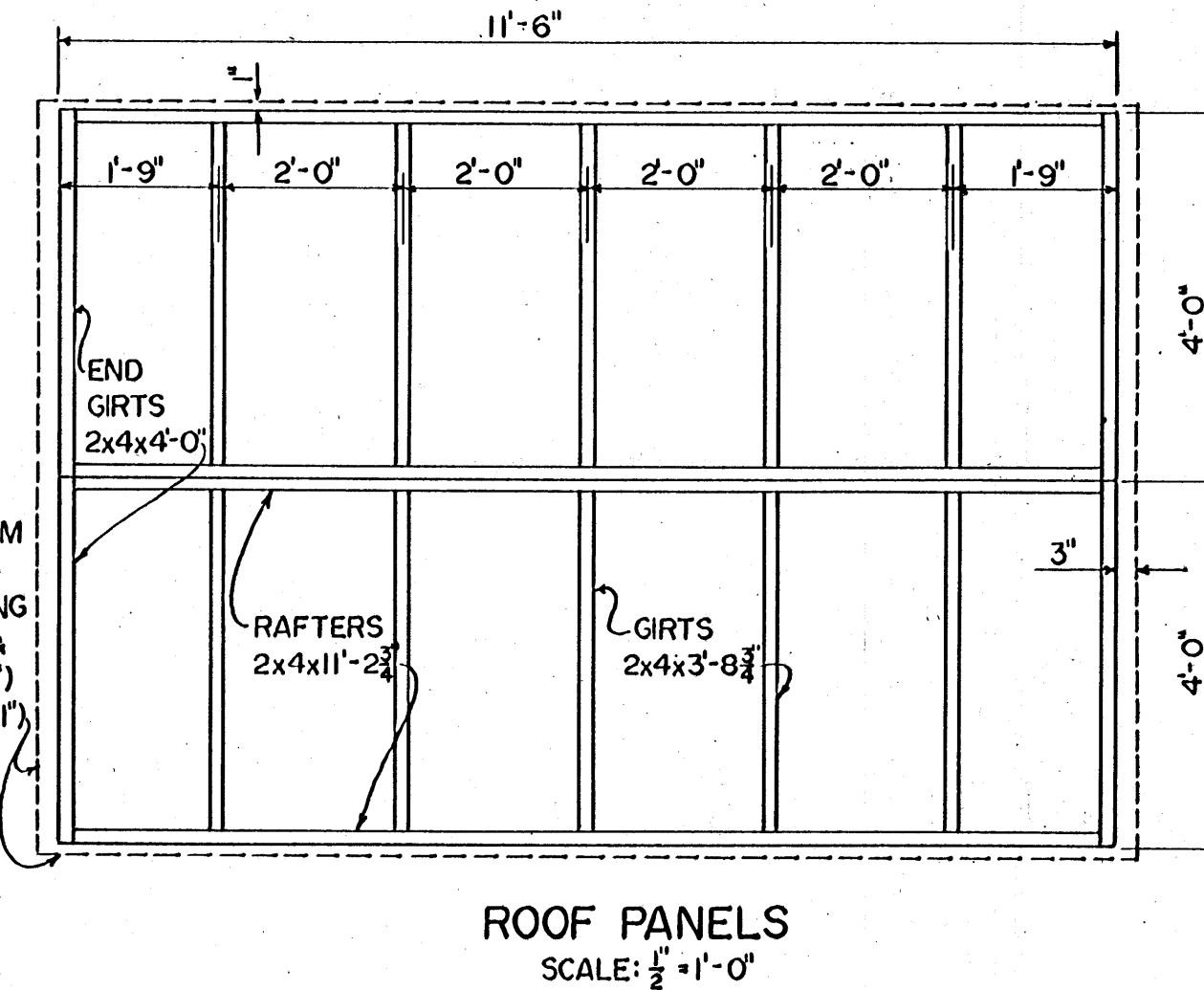
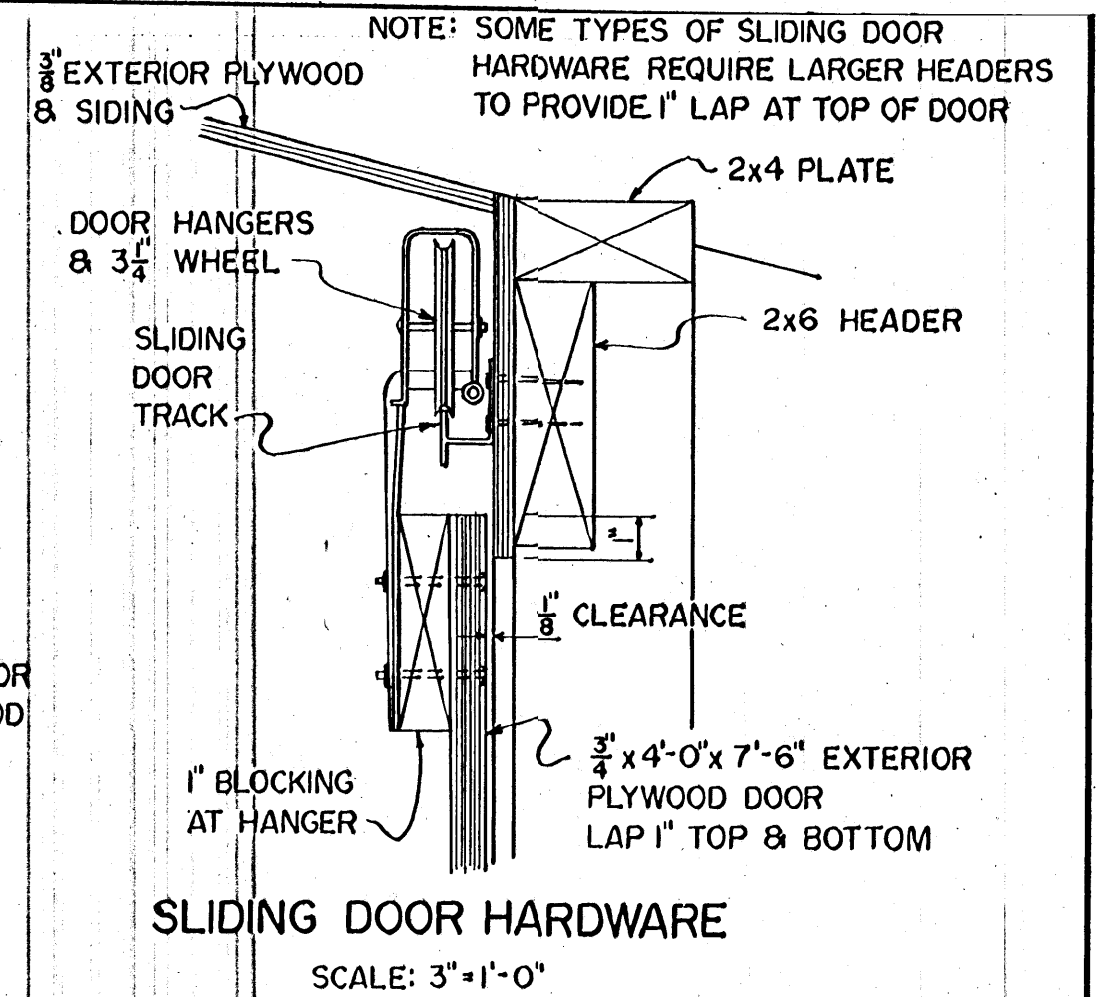
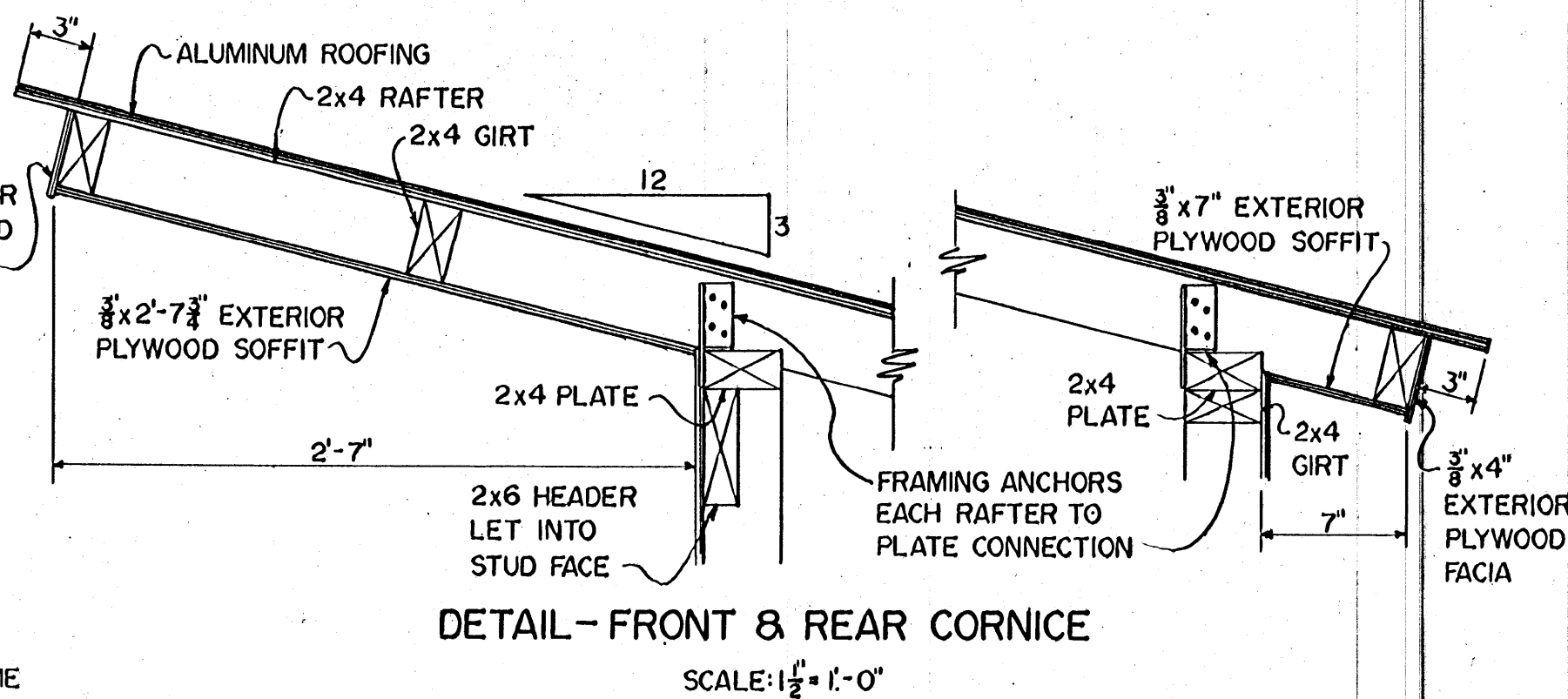
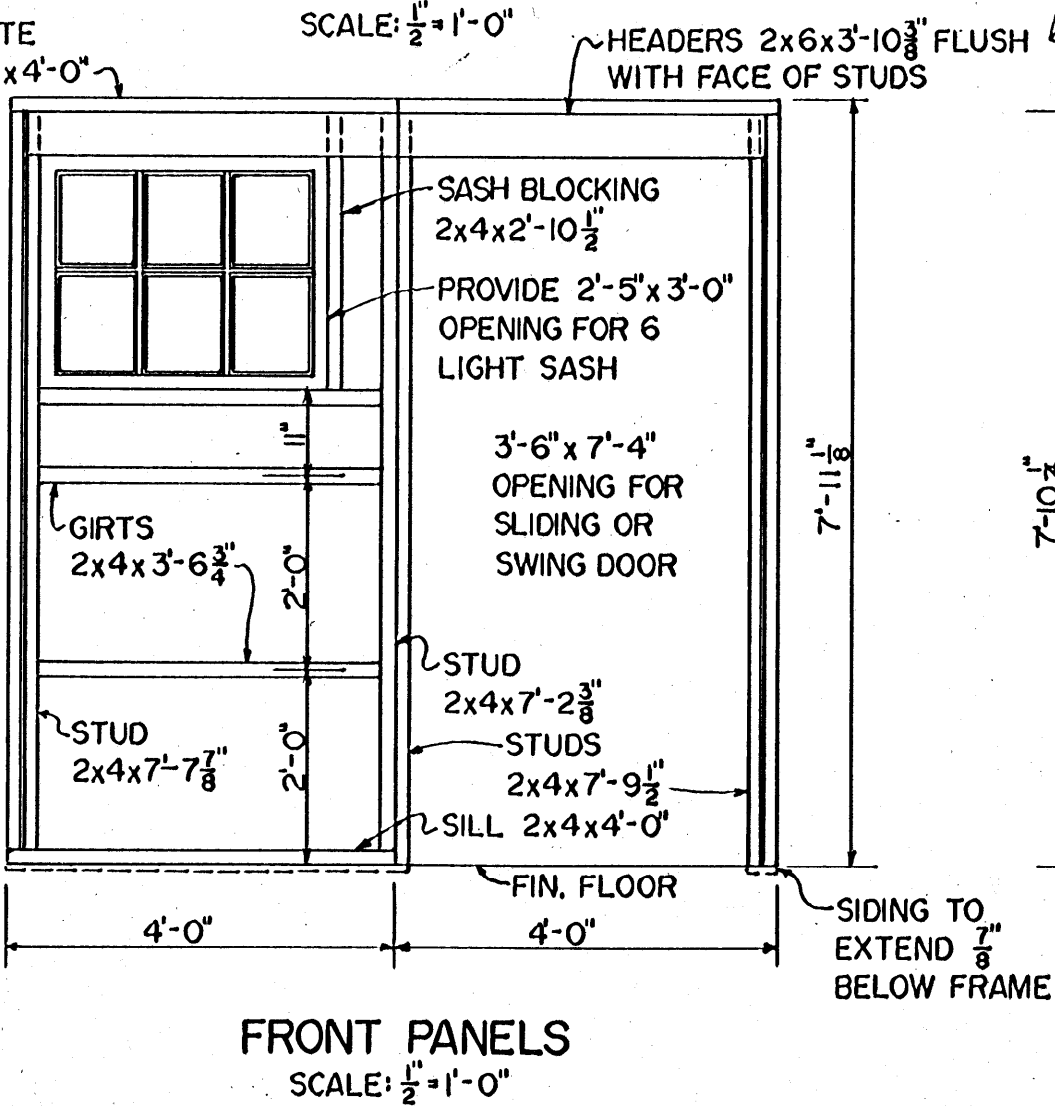
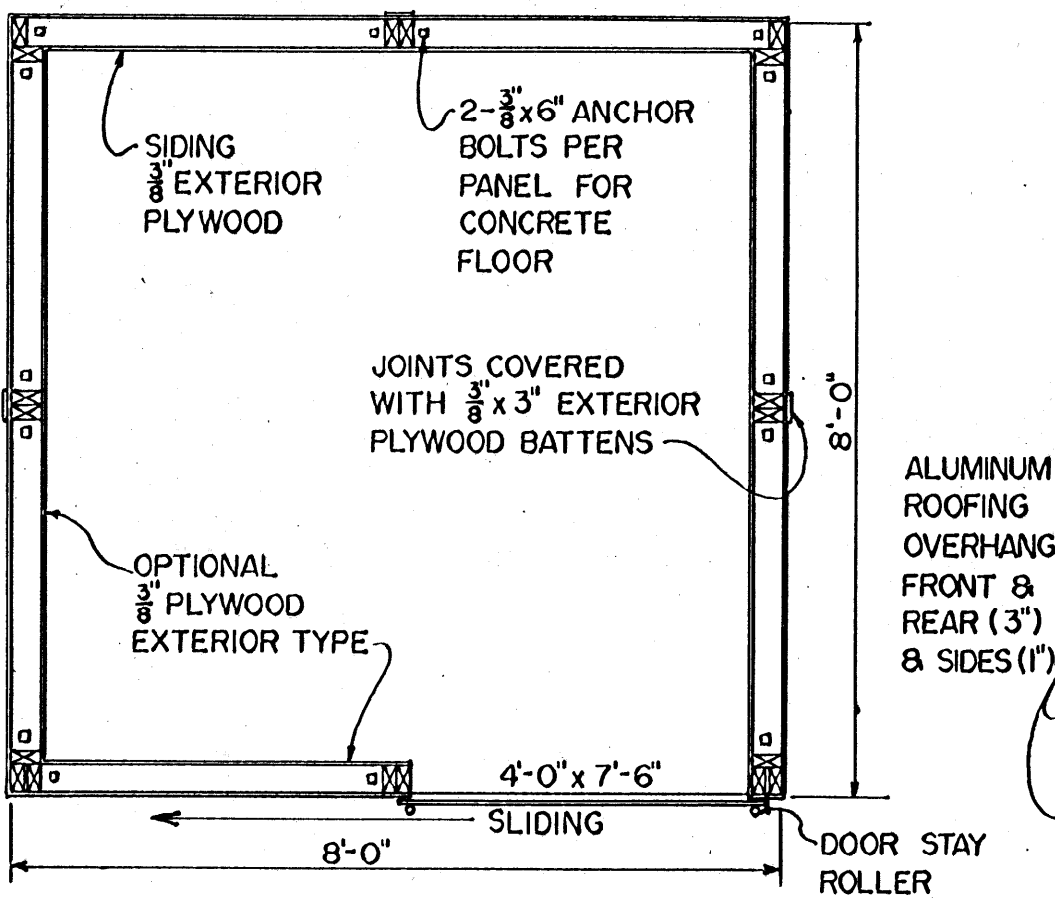
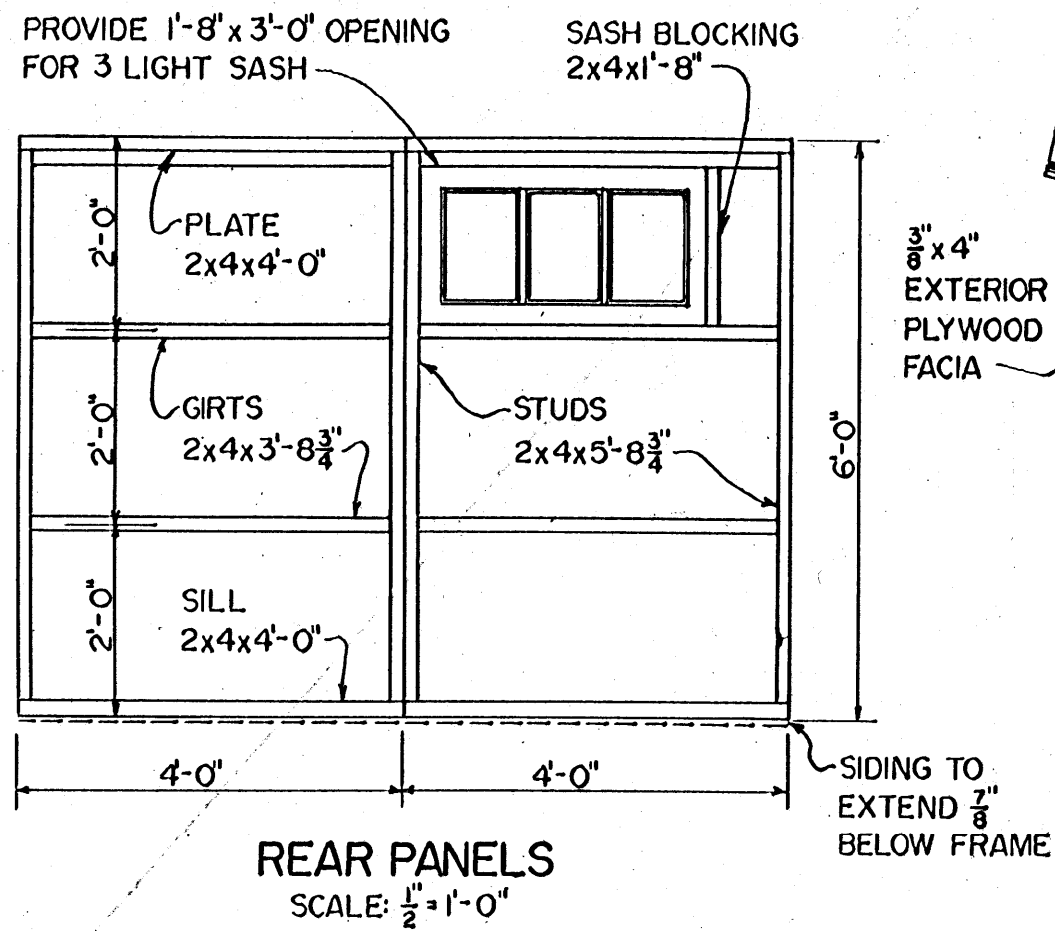


UNIV. OF CONN. PLAN No. 302

COOPERATIVE EXTENSION WORK IN  
AGRICULTURE AND HOME ECONOMICS  
STATE OF MISSISSIPPI  
MISSISSIPPI STATE UNIVERSITY  
AND  
UNITED STATES DEPARTMENT OF AGRICULTURE COOPERATING

**UTILITY SHED**

CONN. '70	6100	SHEET 1 OF 2
-----------	------	--------------



NOTE:  
PLYWOOD TO BE NAILED WITH 6d GALVANIZED NAILS 6" O.C. AT EXTERIOR EDGES & 10" O.C. AT INTERMEDIATE JOINTS.

COOPERATIVE EXTENSION WORK IN AGRICULTURE AND HOME ECONOMICS  
STATE OF MISSISSIPPI  
MISSISSIPPI STATE UNIVERSITY  
AND  
UNITED STATES DEPARTMENT OF AGRICULTURE COOPERATING

**UTILITY SHED**

CONN. '70	6100	SHEET 2 OF 2
-----------	------	--------------