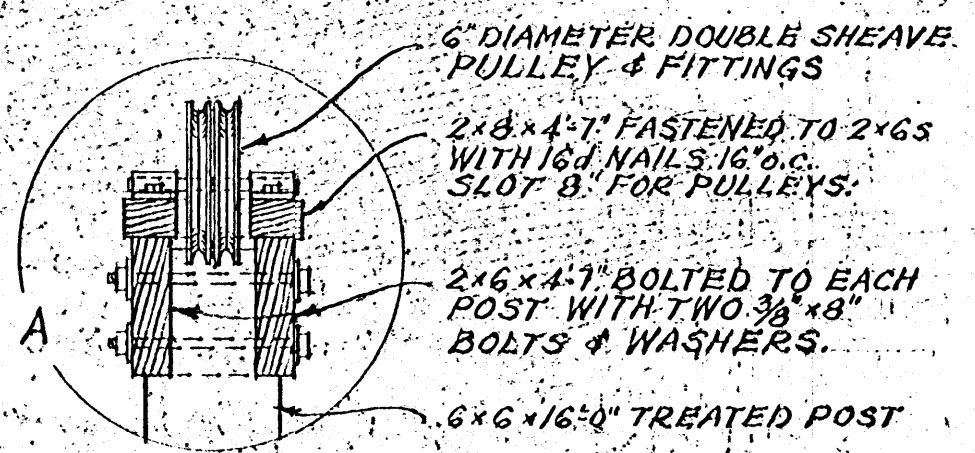
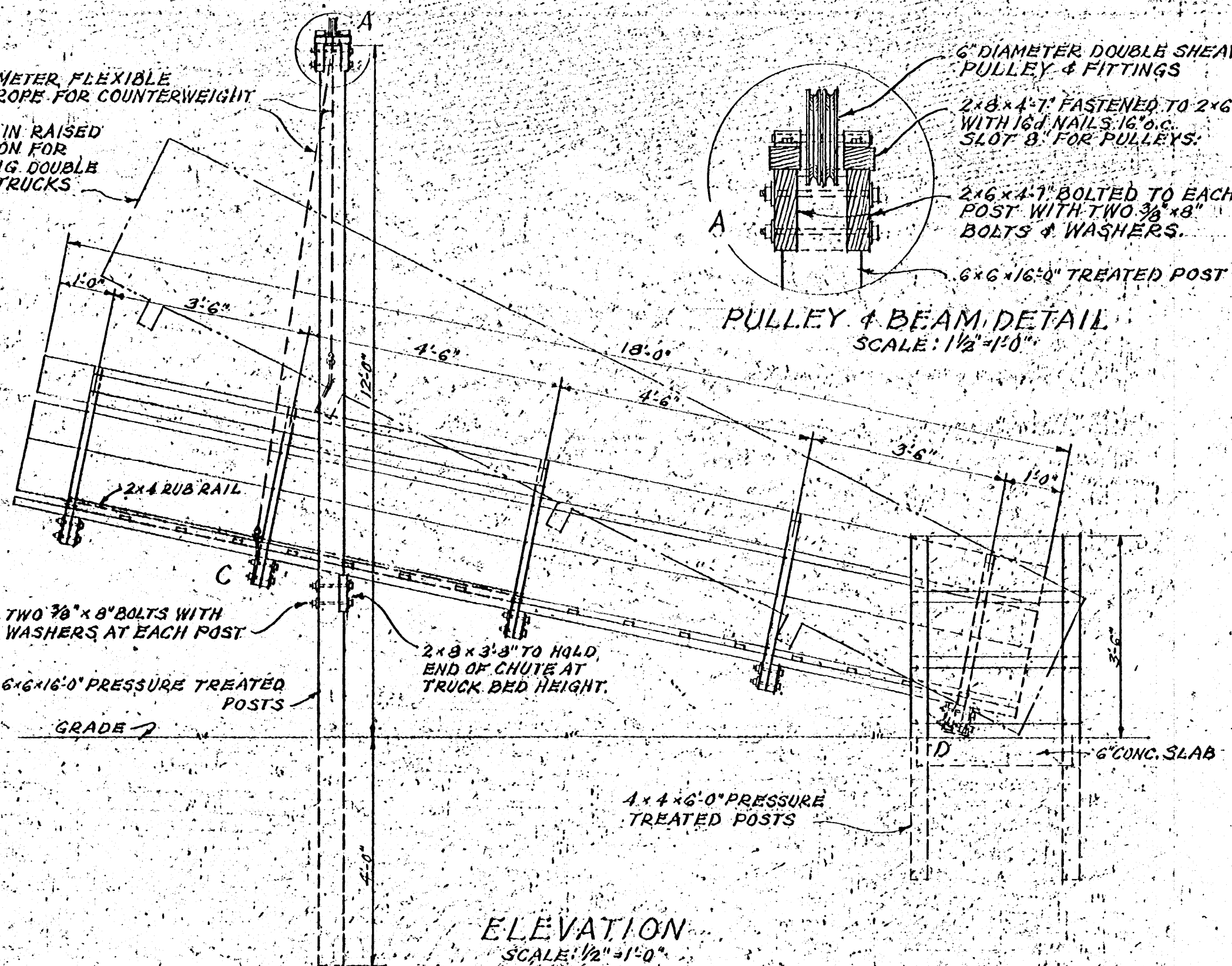


CONCRETE COUNTER WEIGHT - 15" DIAMETER x 2'-0" LONG. CAST AROUND EYE-BOLT. (SOME ADJUSTMENT IN SIZE MAY BE REQUIRED DUE TO VARIATIONS IN WEIGHT OF LUMBER USED FOR CHUTE.)

RUB RAIL

RUB RAIL

3/8" DIAMETER FLEXIBLE WIRE ROPE FOR COUNTERWEIGHT
CHUTE IN RAISED POSITION FOR LOADING DOUBLE DECK TRUCKS

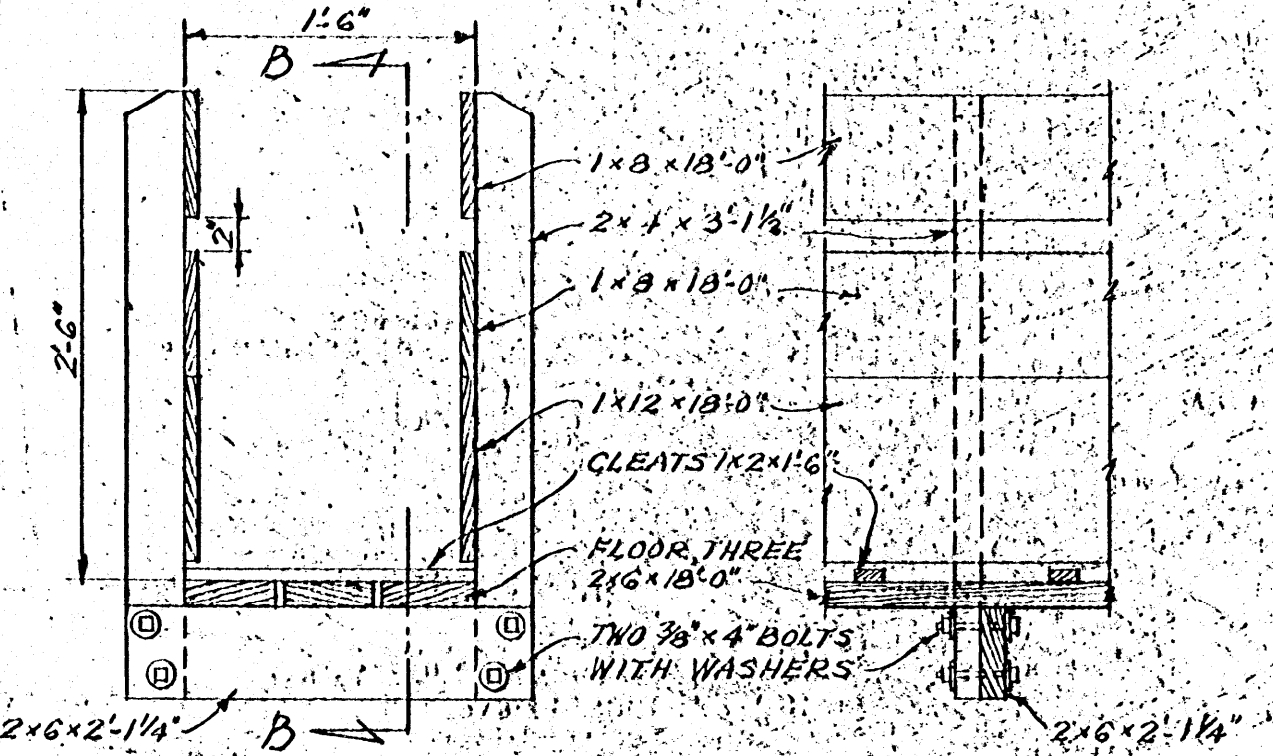
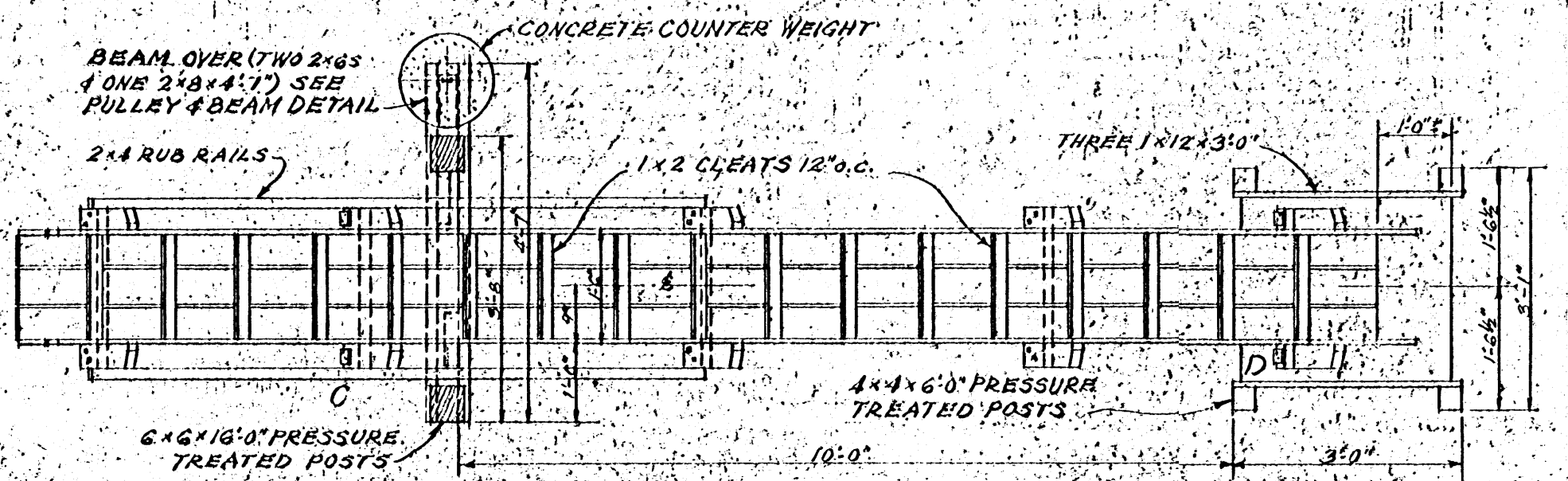
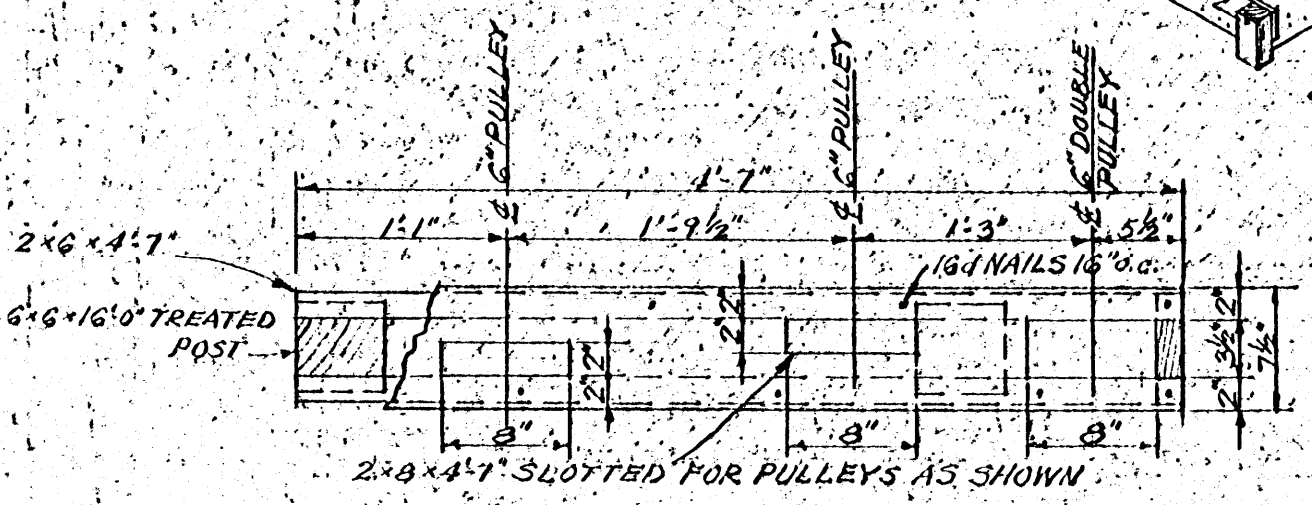


TWO 3/8" x 8" BOLTS WITH WASHERS AT EACH POST
6x6x16'-0" PRESSURE TREATED POSTS

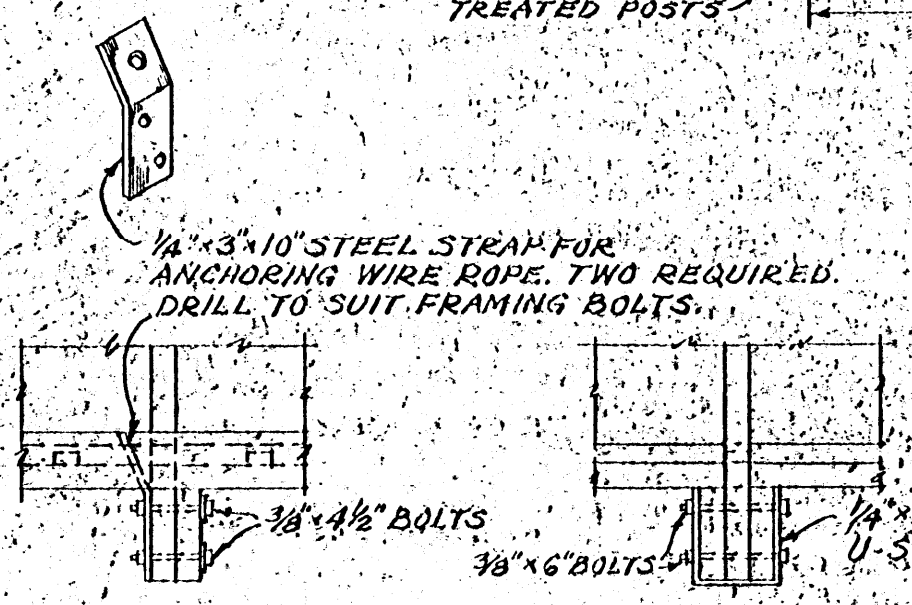
2x8x3'-3" TO HOLD END OF CHUTE AT TRUCK BED HEIGHT.

4x4x6'-0" PRESSURE TREATED POSTS

6" CONC. SLAB



INSIDE ELEVATION AT B-B



DETAIL AT D

SCALE: 1" = 1'-0"

NOTE: DRESSED LUMBER TO BE USED THRU-OUT.

COOPERATIVE EXTENSION WORK IN AGRICULTURE AND HOME ECONOMICS
STATE OF MISSISSIPPI
MISSISSIPPI STATE UNIVERSITY
UNITED STATES DEPARTMENT OF AGRICULTURE COOPERATING

VARIABLE HEIGHT LOADING CHUTE FOR SHEEP

USDA: GI. EX. 5924 SHEET 1 OF 1