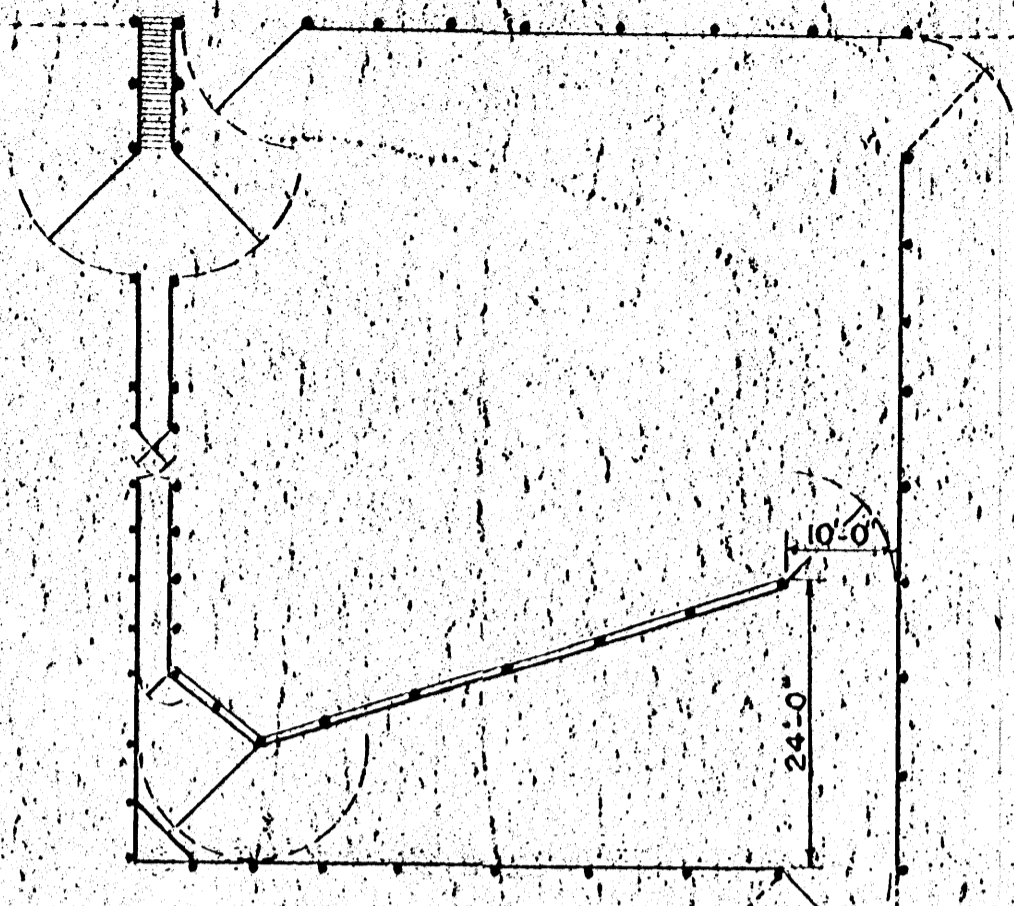
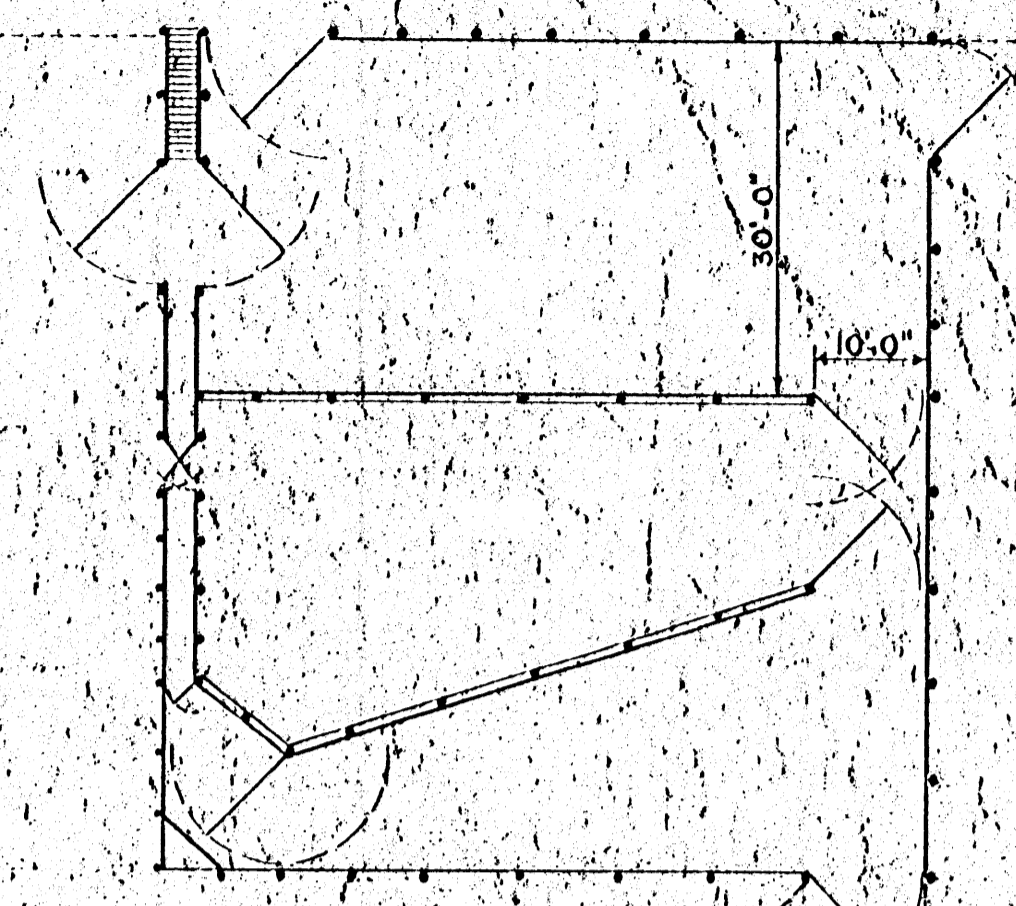


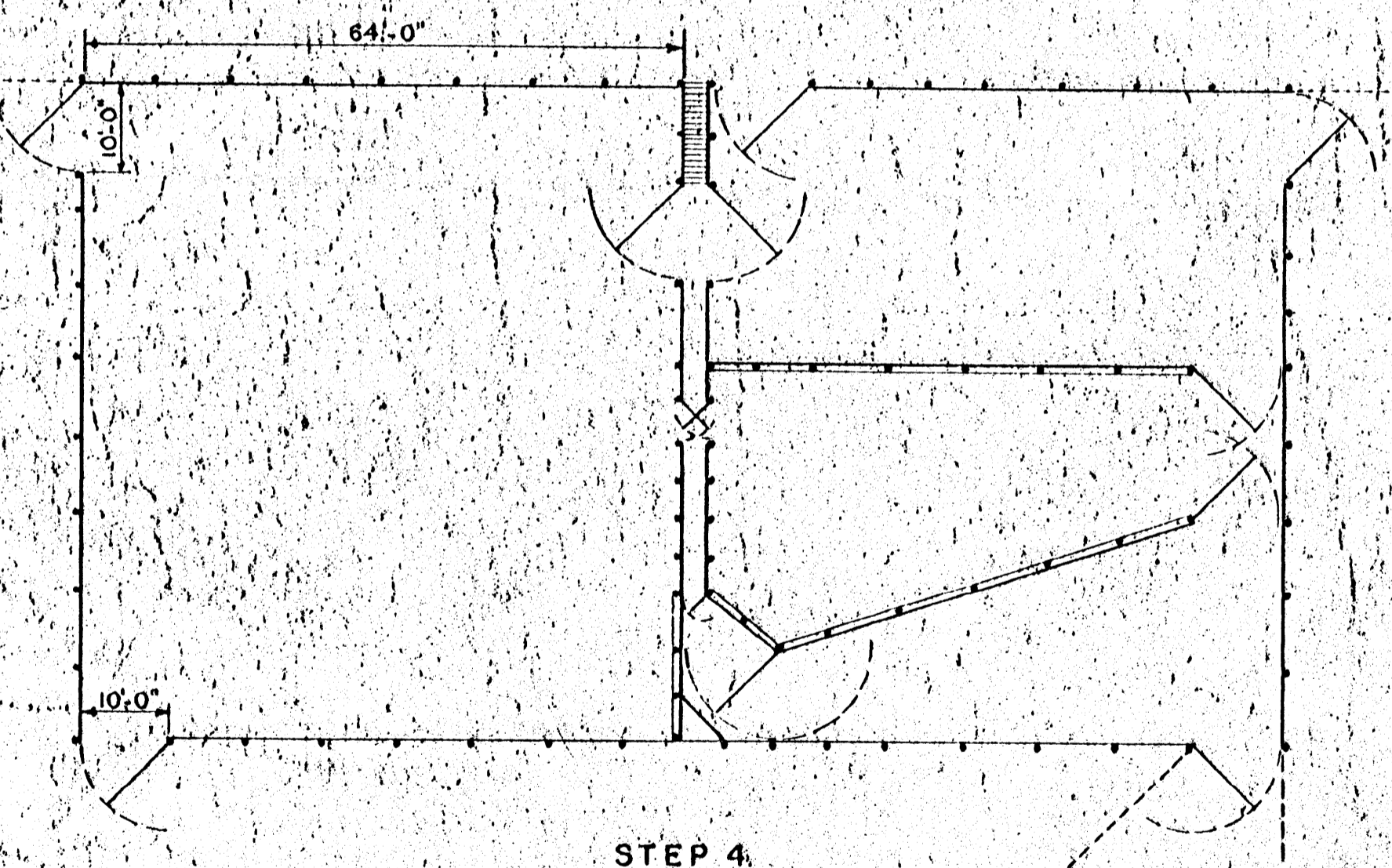
STEP 1



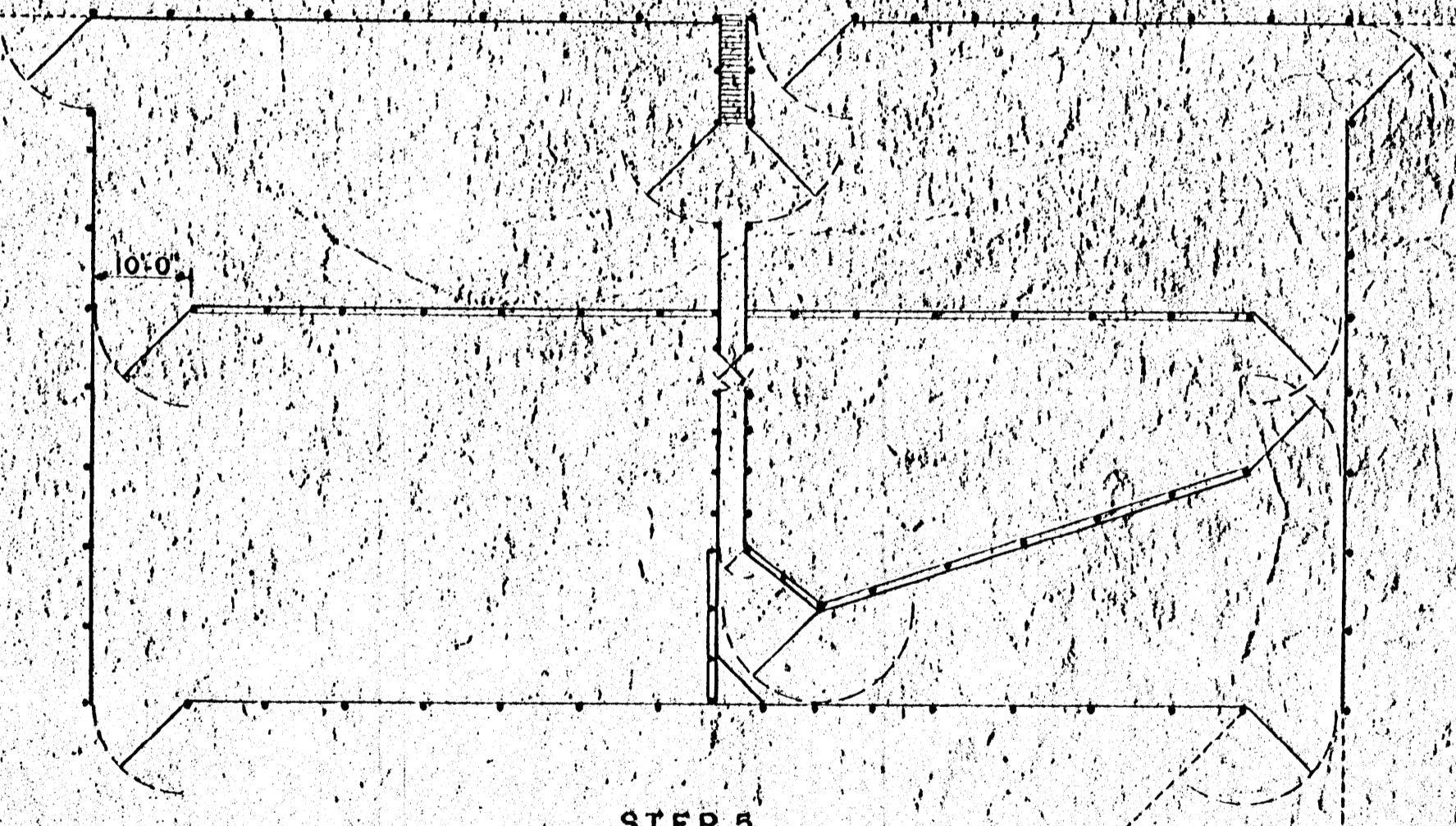
STEP 2



STEP 3



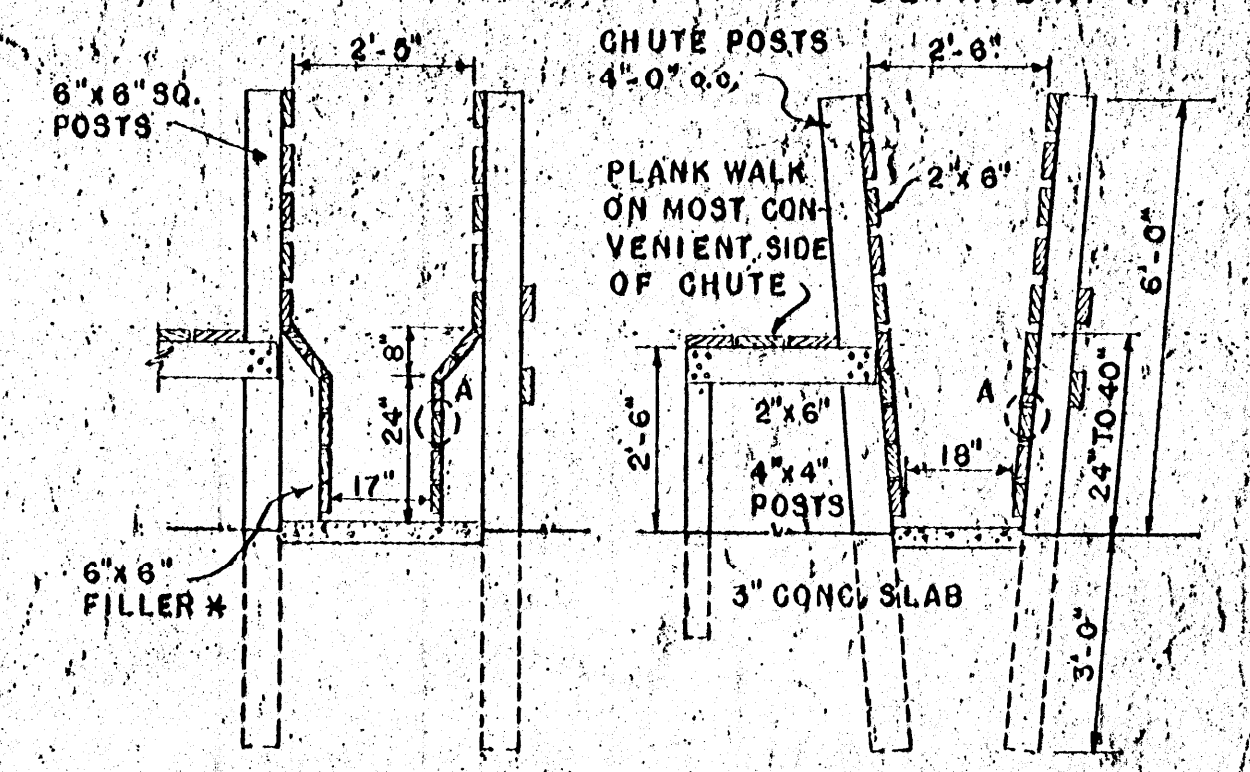
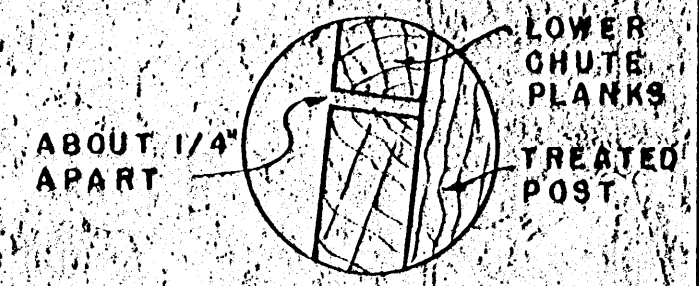
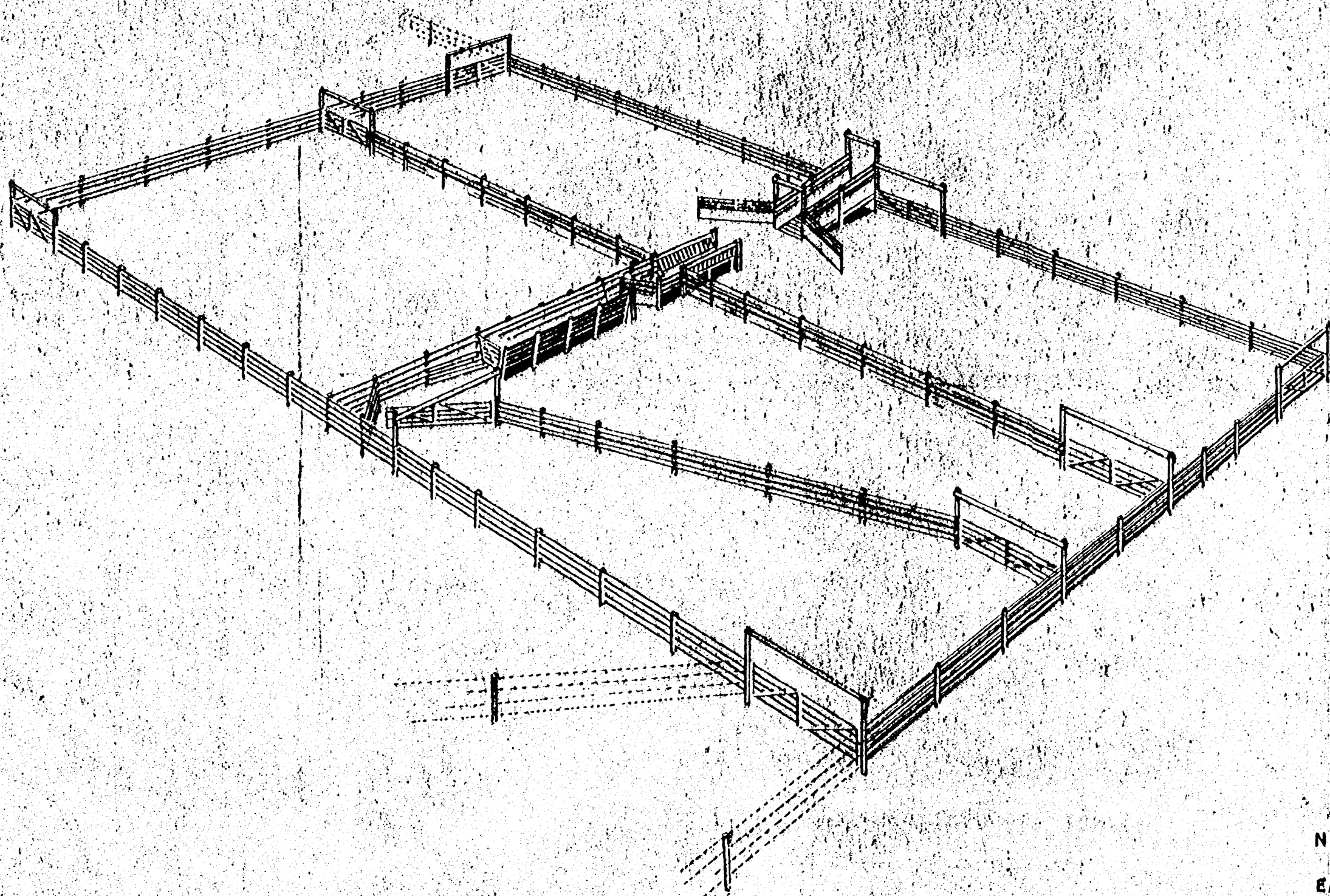
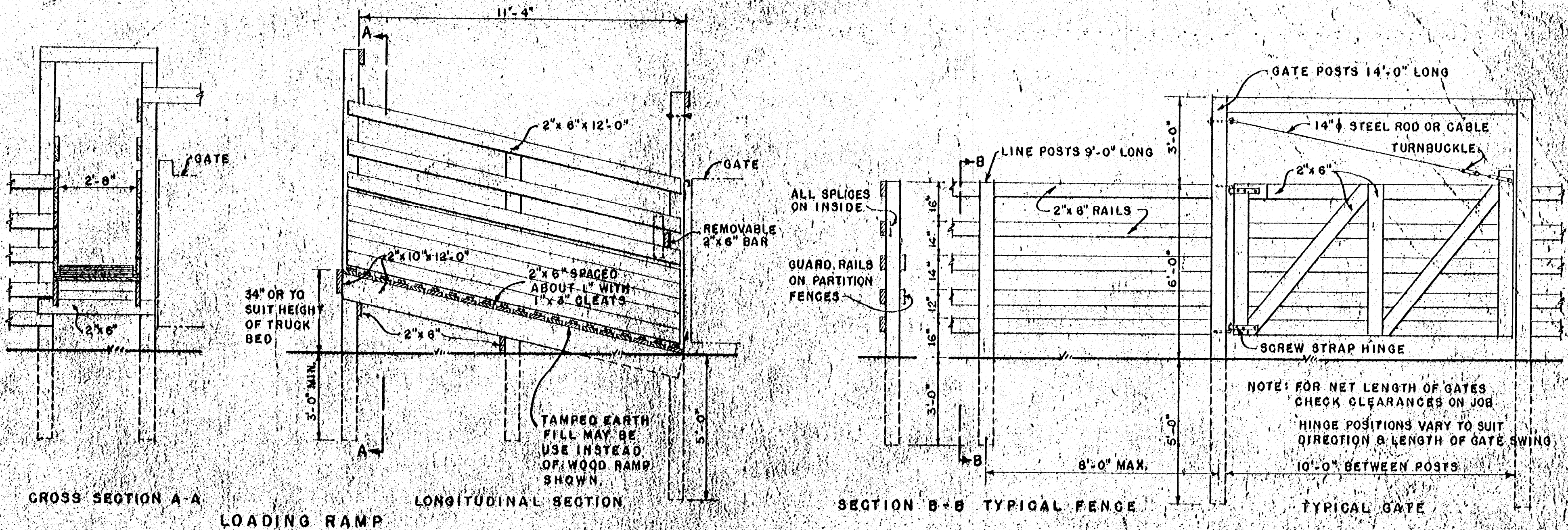
STEP 4



STEP 5

NOTE: 1. STEP 1 INCLUDES NECESSARY EQUIPMENT. MAX. CAPACITY ABOUT 200 HEAD
 2. STEPS 2 & 3 PROVIDE ADDED CONVENIENCE WITH SAME CAPACITY.
 3. STEPS 4 & 5 SHOW COMPLETION OF CORRAL FOR DOUBLE THE ORIGINAL CAPACITY.

COOPERATIVE EXTENSION WORK IN AGRICULTURE AND HOME ECONOMICS			
STATE OF MISSISSIPPI			
MISSISSIPPI STATE UNIVERSITY			
AND UNITED STATES DEPARTMENT OF AGRICULTURE COOPERATING			
EXPANSIBLE CORRAL FOR THE GROWING HERD			
I.A.	'64	EX. 5779	SHEET 1 OF 2



* IF DESIRED, NARROW SECTION OF CHUTE MAY BE MADE REMOVABLE.

NOTE:
 ALL WOOD IN CONTACT WITH EARTH SHOULD BE PRESSURE TREATED WITH CREOSOTE OR OTHER PRESERVATIVE

COOPERATIVE EXTENSION WORK IN
 AGRICULTURE AND HOME ECONOMICS
 STATE OF MISSISSIPPI
 MISSISSIPPI STATE UNIVERSITY
 AND
 UNITED STATES DEPARTMENT OF AGRICULTURE COOPERATING

**EXPANSIBLE CORRAL
 FOR THE GROWING HERD**

LA. '54 EX. 5779 SHEET 2 OF 2