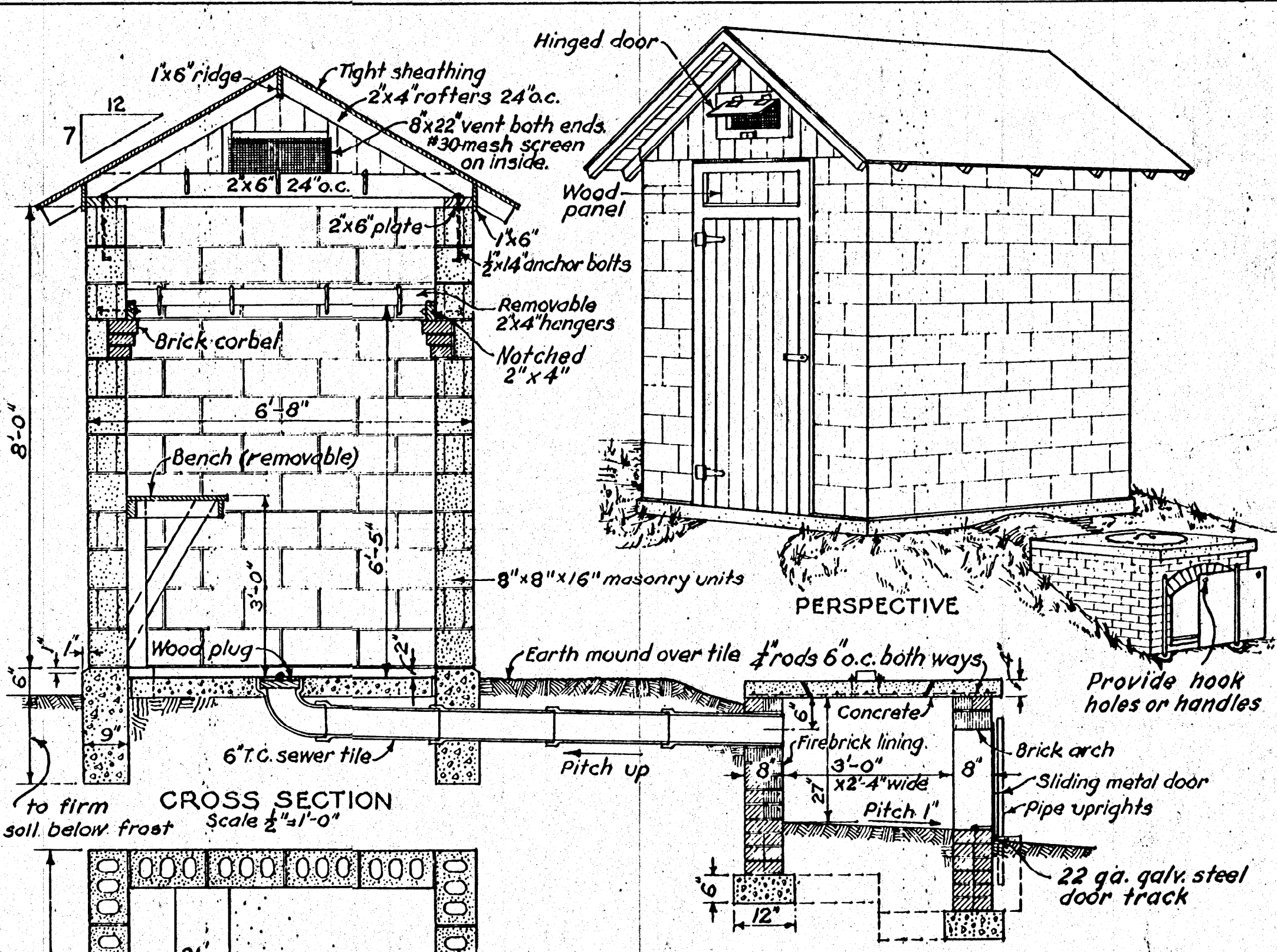
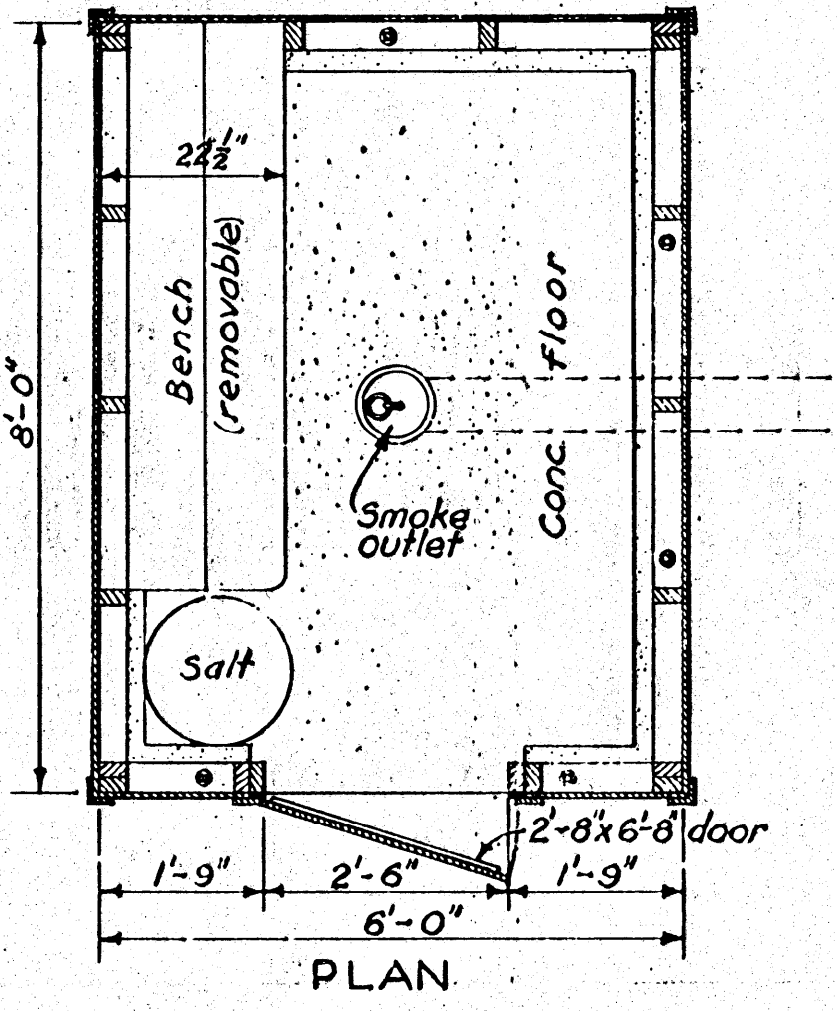


- BILL OF MATERIALS  
SMOKEHOUSE**
- CONCRETE** 1:3:5 mix  
10 bags cement, 1 cu. yd. sand, 1 1/2 cu. yds. gravel.
- LUMBER**  
3 pieces 2x6x6-0" gross ties.  
3 " 2x4x12-0" header, bench and hangers.  
12 " 2x4x10-0" sills, studs, and rafters.  
23 " 2x4x8-0" " " plates, and hangers.  
2 " 1x10x8-0" bench and vent doors.  
2 " 1x6x10-0" ridge and trim.  
2 " 1x6x7-0" door battens.  
6 " 1x4x10-0" corner boards and trim.  
6 " 1x4x8-0" trim.  
6 " 1x6x7-0" T & G boards for door.  
275 ft. B.M. 6" drop siding.  
120 ft. B.M. roof sheathing.  
Roofing or asphalt shingles to cover 100 sq. ft. roof area.
- MISCELLANEOUS**  
7-1/2 x 12" anchor bolts, with nuts and washers.  
1 pair 8" Tee hinges, 1 safety hasp  
2-pair 2x2" hinges for vent doors.  
1-piece metal flashing-6x40"  
4 lin. ft. #30-mesh wire screen -10" wide.  
4 lengths 6" T.C. sewer pipe, 1-6" 90° T.C. elbow  
Nails, hanging hooks, and paint not included.

- FIREBOX**
- CONCRETE** 1:2:3 mix.  
6 bags cement, 1/2 cu. yd. sand, 3/4 cu. yd. broken hard brick, gravel or stone, (brick more heat resistant).
- MISCELLANEOUS**  
10 lin. ft. 6x6 No. 9 wire fabric 30" wide.  
6 pieces 1/2" steel rods 42" long.  
10 " 3/4" " 32" "  
2 " 1 1/2" pipe 36" long.  
1-piece 24"x32" metal, sliding door.

(A)



- BILL OF MATERIALS  
SMOKEHOUSE**
- CONCRETE AND MORTAR.**  
Concrete 1:3:5 mix. Mortar 1:3 + 10% lime.  
14 bags cement, 1 1/2 cu. yds. sand, 2 cu. yds. gravel  
65 lbs hydrated lime.
- 142 8x8x16" smooth face masonry units.  
12 8x4x16" " " " "  
2 8x4x8" " " " "  
14 8x8x8" " " half " "  
52 8x8x16" " " corner " "  
12 8x8x16" " " jamb " "  
12 8x8x8" " " half " "
- 100 common brick
- LUMBER**  
4 pieces 2x6x8-0" plates and door jambs.  
6 " 2x6x7-0" " cross ties.  
9 " 2x4x10-0" rafters, gable-end studs.  
7 " 2x4x6-0" bench and removable hangers.  
3 " 2x3x8-0" door casing.  
9 " 1x6x10-0" " battens, ridge, trim.  
9 " 1x4x10-0" trim.  
1 " 1x12x6-0" bench.  
1 " 1x10x10-0" " and vent doors.  
120 ft. B.M. roof sheathing. 56 ft. B.M. 1x6" T & G. door, gables.  
Roofing or asphalt shingles to cover 100 sq. ft. roof area.
- MISCELLANEOUS**  
8-1/2 x 14" anchor bolts. 1 pr. 8" Tee hinges. 1 pr. 2x2" hinges.  
6x38" metal flashing. 4 lin. ft. #30-mesh screen 10" wide.  
Nails, hanging hooks, and paint not included.
- FIREBOX**  
7 bags cement, 1/2 cu. yd. sand, 3/4 cu. yd. gravel.  
450 common brick, 90 firebrick.  
9-1/2 steel rods 40" long. 6-1/2 steel rods 48" long.  
2 pieces 1 1/2" pipe 36" long.  
1 metal sliding door 24"x32".

COOPERATIVE EXTENSION WORK IN  
AGRICULTURE AND HOME ECONOMICS

STATE OF MISSISSIPPI  
MISSISSIPPI STATE UNIVERSITY  
UNITED STATES DEPARTMENT OF AGRICULTURE COOPERATING

**SMOKE HOUSE**

USDA '68 EX. 5695 SHEET 1 OF 1

(B)