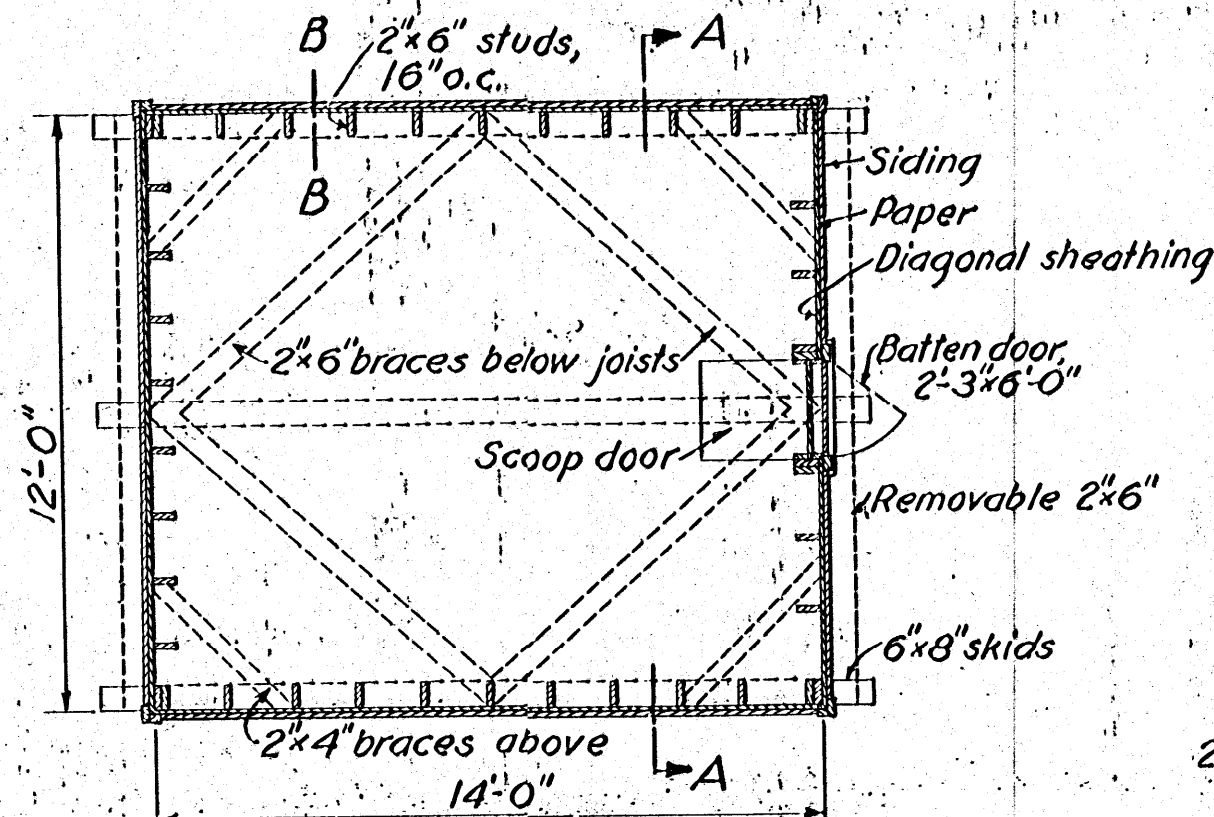
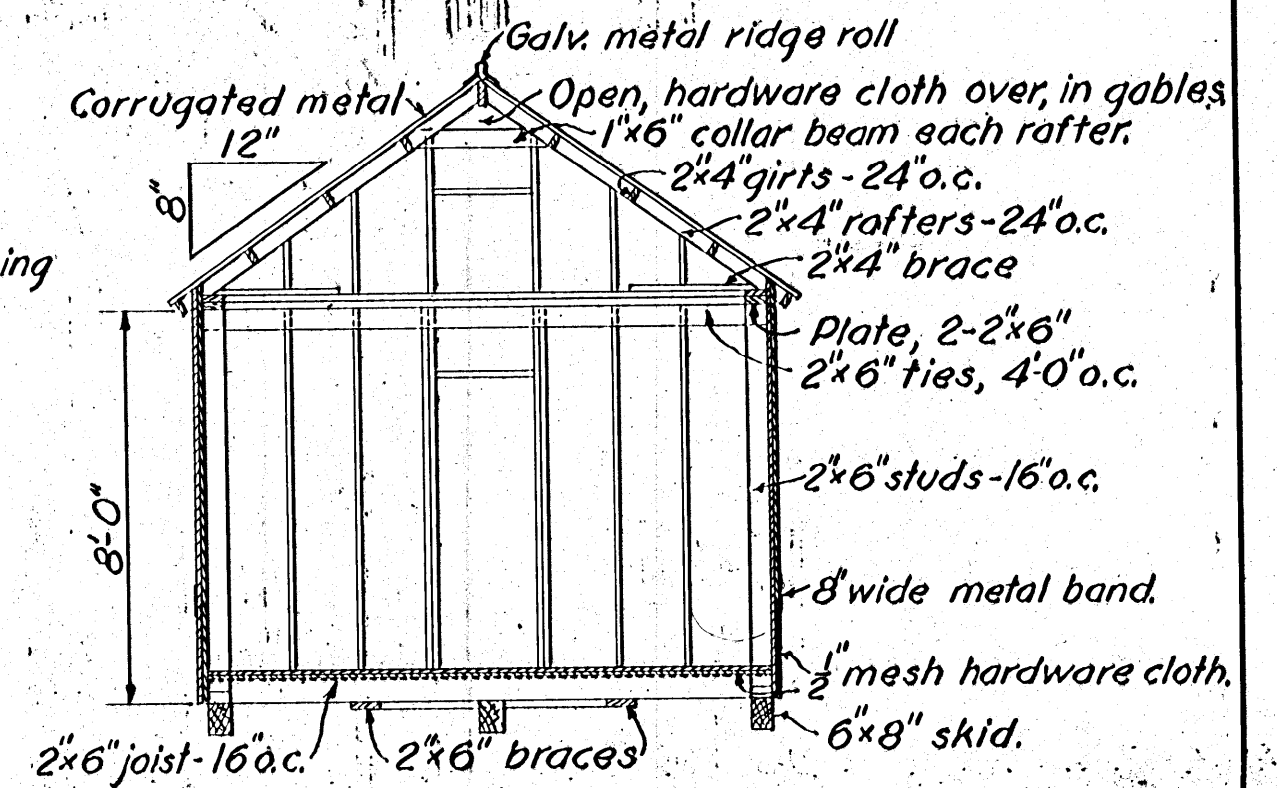


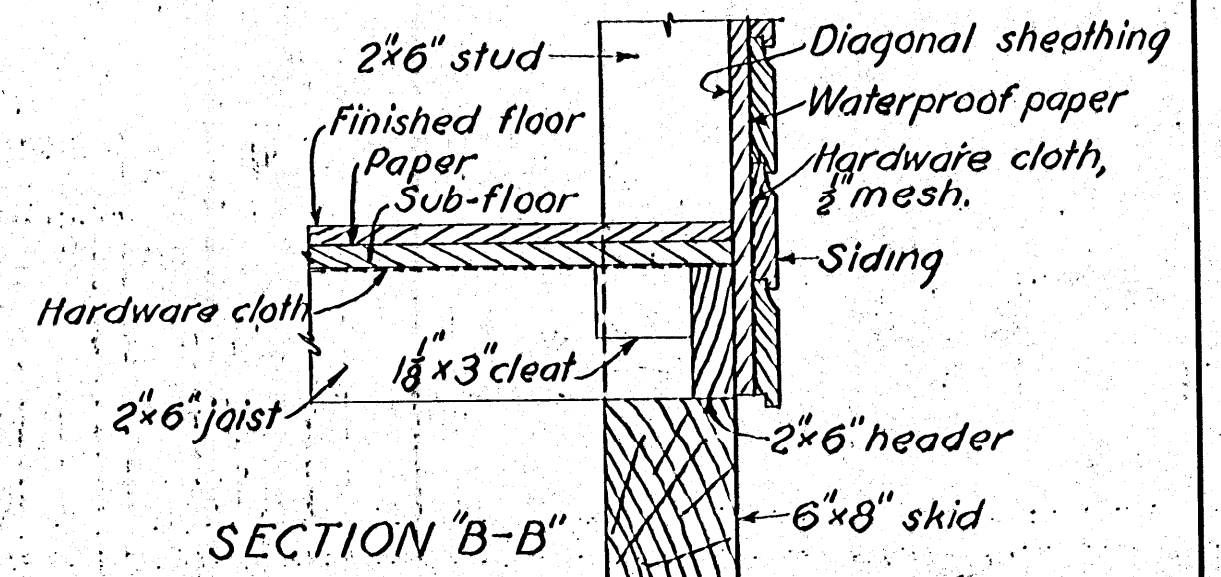
PERSPECTIVE



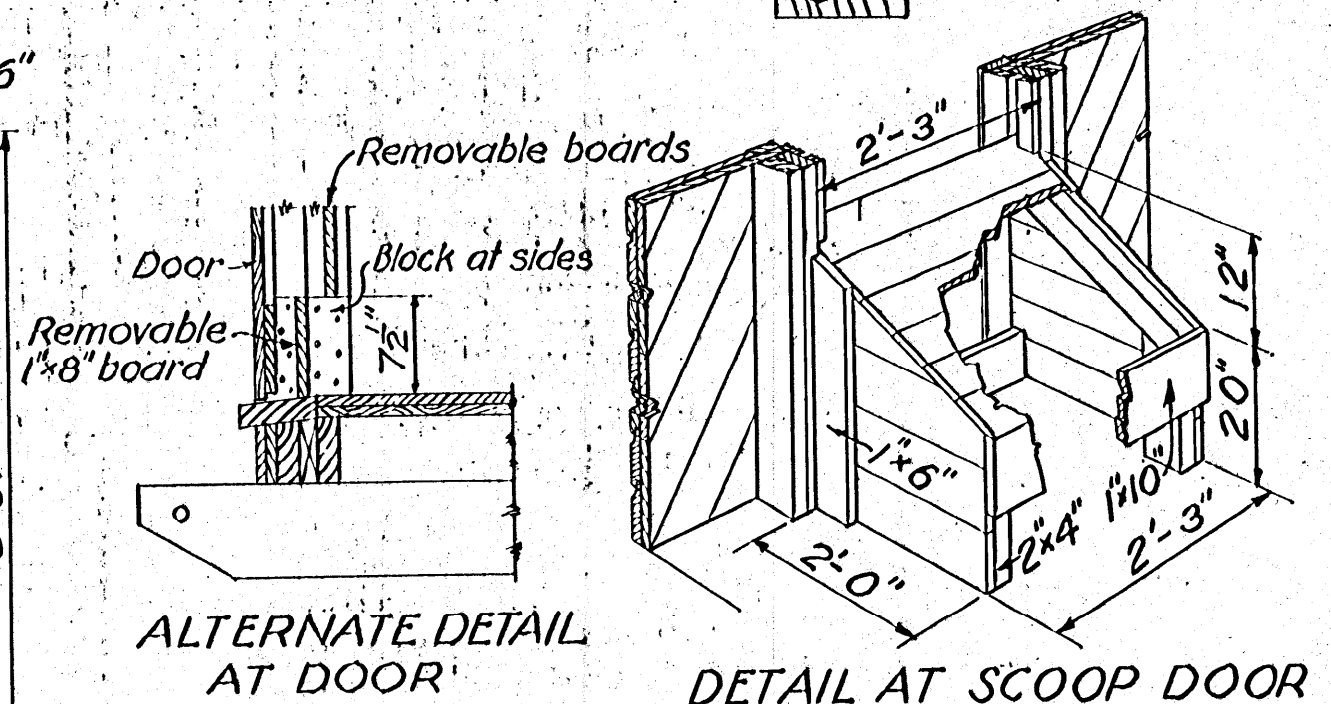
PLAN  
Scale  $\frac{1}{4}$ "=1'-0"



SECTION A-A  
Scale  $\frac{1}{4}$ "=1'-0"

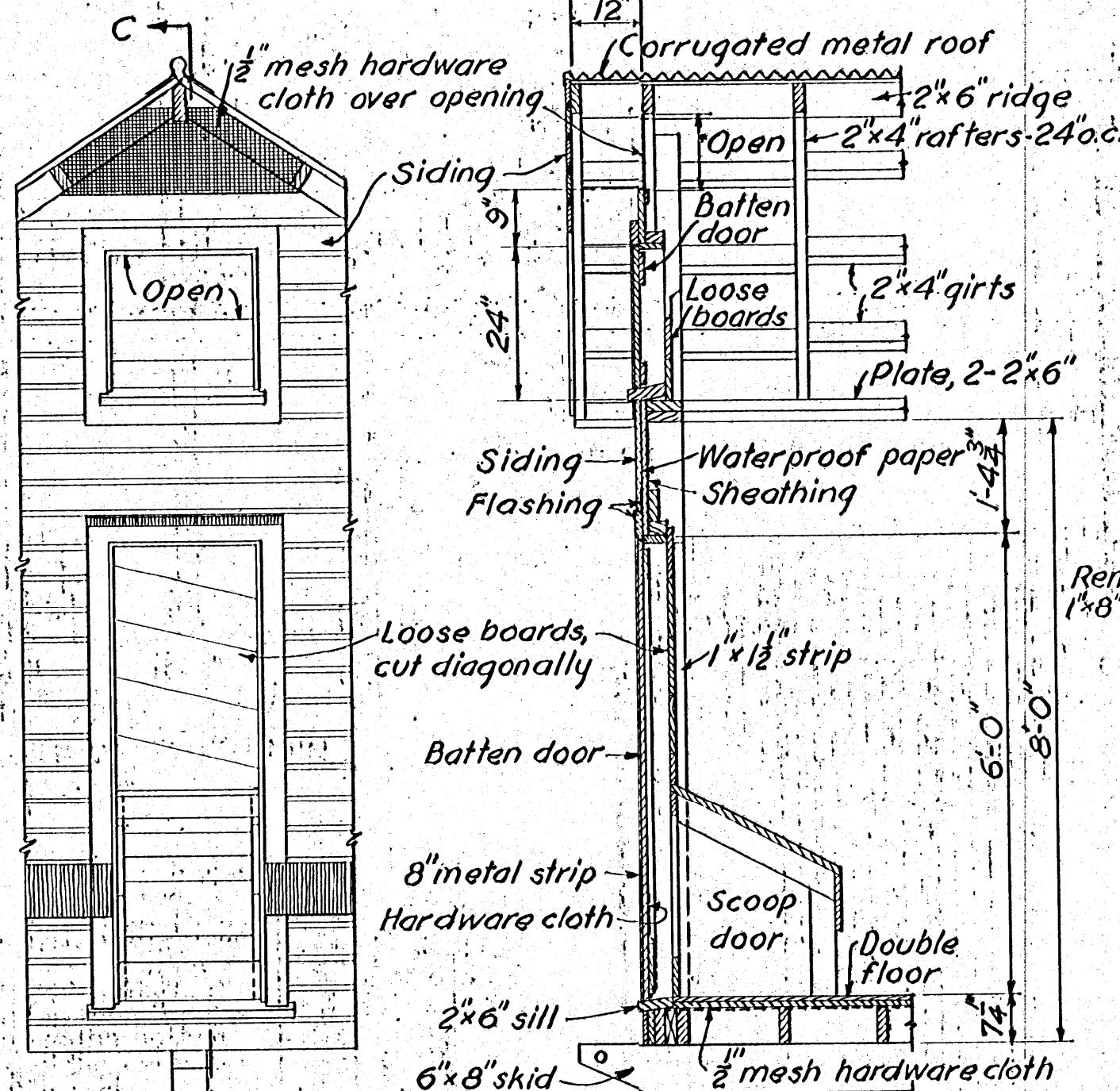


SECTION "B-B"



ALTERNATE DETAIL  
AT DOOR

DETAIL AT SCOOP DOOR



SECTION "C-C"

ELEVATION  
Batten door not shown.

DOOR DETAILS  
Scale  $\frac{1}{2}$ "=1'-0"

BILL OF MATERIAL

- 3 - 6" x 8" x 16'-0" - skids.
- 24 - 2" x 6" x 16'-0" - studs and ridge
- 4 - 2" x 6" x 14'-0" - side plates.
- 22 - 2" x 6" x 12'-0" - joists, ties, spreaders, & end plates.
- 4 - 2" x 6" x 10'-0" - braces.
- 20 - 2" x 4" x 16'-0" - rafters, girts, braces etc.
- 120 - lin. ft. 1 1/2" x 4" - corner boards, trim, and casing.
- 50 - lin. ft. 1 1/2" x 4" - corner boards and cleats.
- 800 ft. B.M., T. & G. - sheathing - walls, sub-floor, etc.
- 250 ft. B.M., T. & G. - flooring - finished floor and doors.
- 600 ft. B.M. - drop siding.
- 3 - 216 ft. rolls - waterproof building paper.
- 2 - 2" x 6" - door sills.
- 16 pieces-26 ga. - corrugated metal, 8'-0" long-roof.
- 16 lin. ft. - metal ridge roll.
- 290 sq. ft. 1/2" mesh - hardware cloth.
- 60 lin. ft. - 28 ga. - galv. metal strips - 8" wide.
- 3 - 6" Tee hinges.
- 2 - 4" Tee hinges.
- 2 - Hasps.

Nails, paint, and log sills not included in above list

CAPACITY-1000 BUSHELS.

COOPERATIVE EXTENSION WORK IN  
AGRICULTURE AND HOME ECONOMICS

AND  
U. S. DEPT. OF AGRICULTURE COOPERATING

MOVABLE GRANARY (1000 BU)

U. S. D. A. | EX. 5531 | SHEET 1 OF 1